

TRST-A00
TRST-A1x
TRST-C10BI
Printer Driver for
Windows XP
Windows 7 (x86)
Windows 7 (x64)
User's Manual

2nd Edition : Feb 22, 2013

TOSHIBA TEC SINGAPORE PTE LTD

Copyright(C) 2013

TOSHIBA TEC SINGAPORE PTE LTD

This document describes the precautions for using the TRST Printer Driver for Windows XP, Windows 7 (x86), and Windows 7 (x64).

This document assumes that the reader is familiar with the following:

- General characteristics of Windows and Printer Driver for Windows.
- General characteristics of TRST printer

Notes:

- All rights reserved. It is prohibited to use or duplicate a part or whole of this document without the permission of TOSHIBA TEC SINGAPORE PTE LTD.
- This document is subject to change without prior notice.
- * Microsoft, Windows, Windows XP, and Windows 7 are registered trademarks of Microsoft Corporation in the United States and/or other countries.
- * The official name of Windows is the “Microsoft Windows Operating System” .

Revision Record

No.SPAA-491

TRST Printer Driver for Windows
User's Manual

Rev.No.	Date	Pages	Description
01	June 5, 2012	---	Original issue
02	Feb 22, 2013	---	Graphic Print Control for C10 Model

Table of Contents

1	Operation Environment	5
2	Install the Printer Driver in Windows XP	6
3	Update the Printer Driver in Windows XP	13
4	Uninstall the Printer Driver in Windows XP	19
5	Install the Printer Driver in Windows 7	22
6	Update the Printer Driver in Windows 7	28
7	Uninstall the Printer Driver in Windows 7	33
8	Examples for a receipt printing	38
8.1	Receipt printing.....	38
8.1.1	Document setting	40
8.1.2	Logo setting	40
8.1.3	Font setting	41
8.1.4	Barcode setting.....	42
8.1.5	ControlA Font setting	43
8.1.6	Graphic Print Control (Only for C10).....	45
8.2	Print Rendering.....	48
9	Note	49
9.1	Log file setting	49

1 Operation Environment

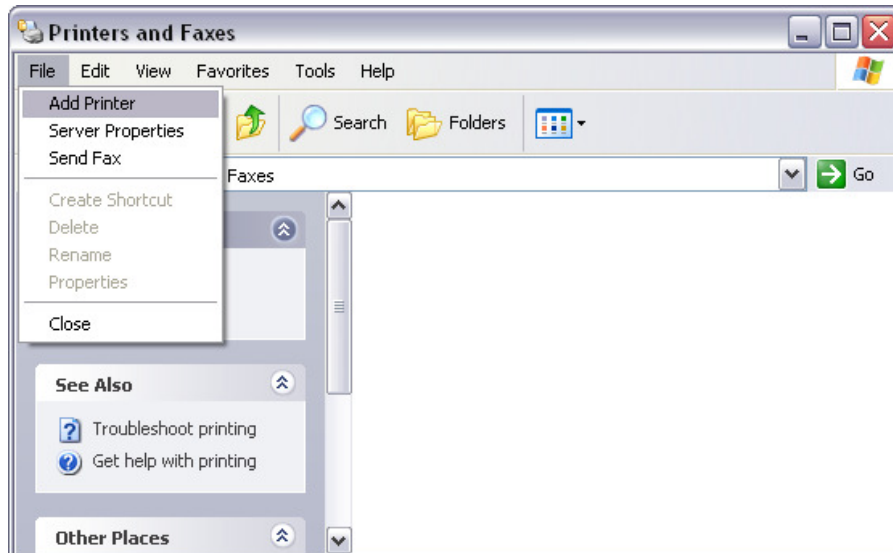
This printer driver works with the environment below:

OS	Windows XP, Windows 7 (x86), Windows 7 (x64)
I/F	USB, Serial (RS232C), Parallel, LAN

2 Install the Printer Driver in Windows XP

Open 'Printers and Faxes'.

Go to 'File' menu and select 'Add Printer'.



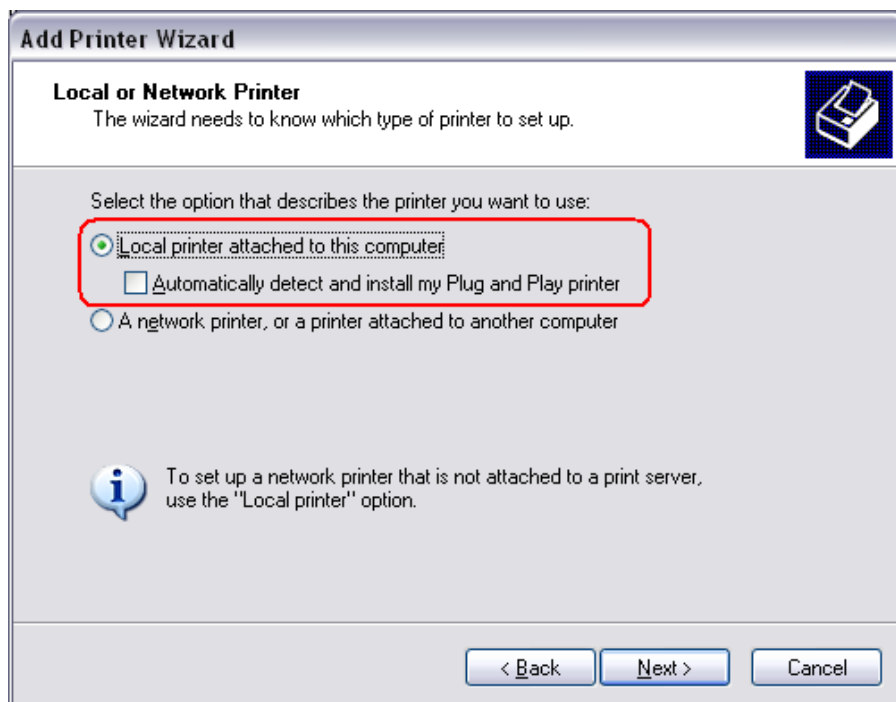
The 'Add Printer Wizard' dialog appears.

Click 'Next' to continue.



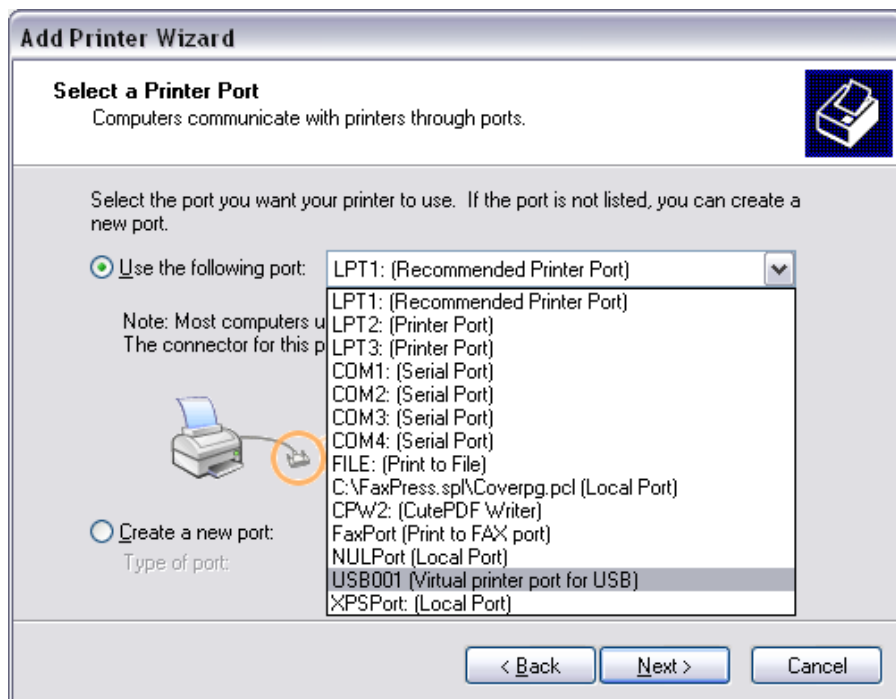
Select 'Local printer attached to this computer' and uncheck 'Automatically detect and install my Plug and Play printer'.

Click 'Next' to continue.

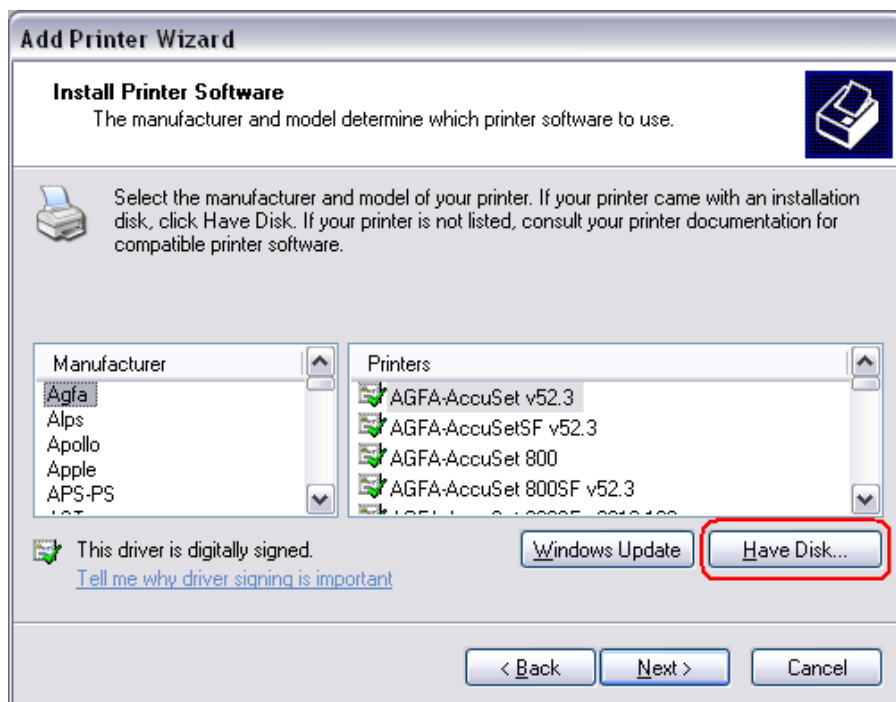


Select 'Use the following port' option and select the appropriate port from the dropdown list.

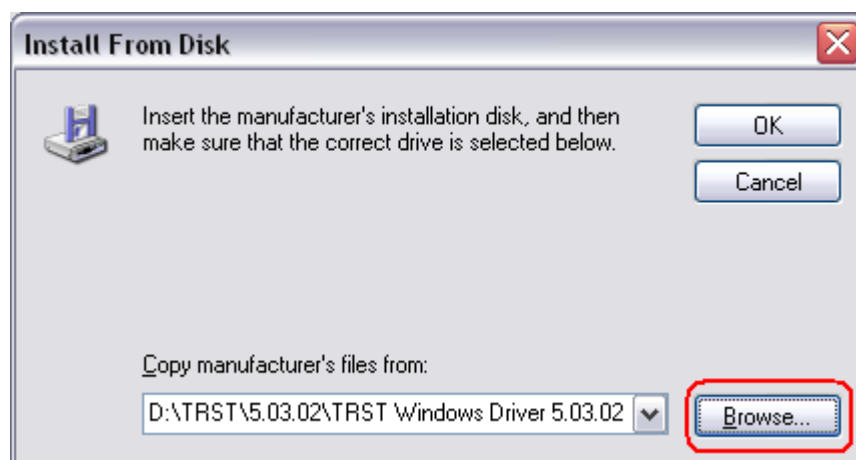
Then click 'Next'.



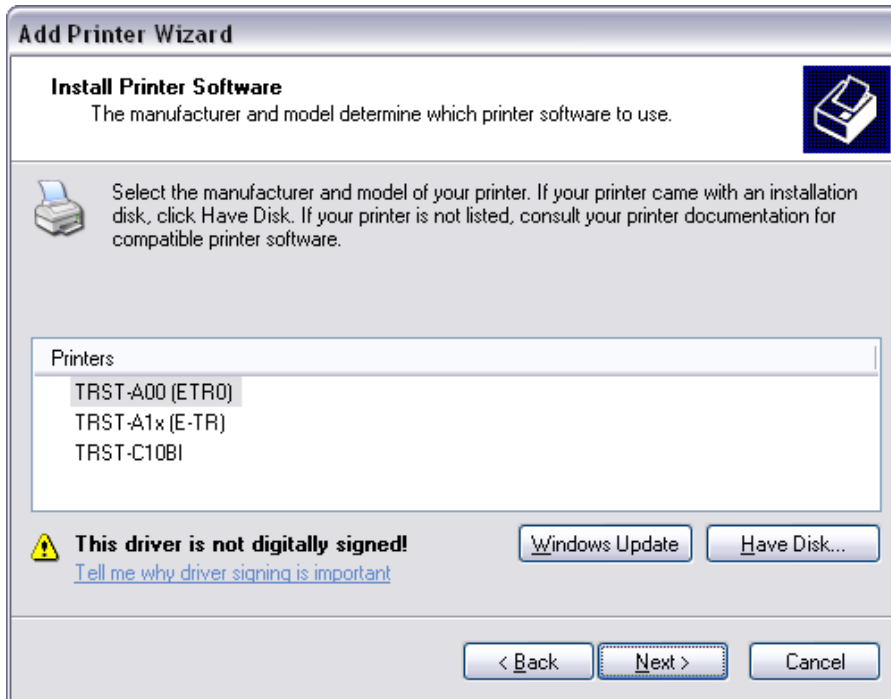
Click 'Have Disk'.



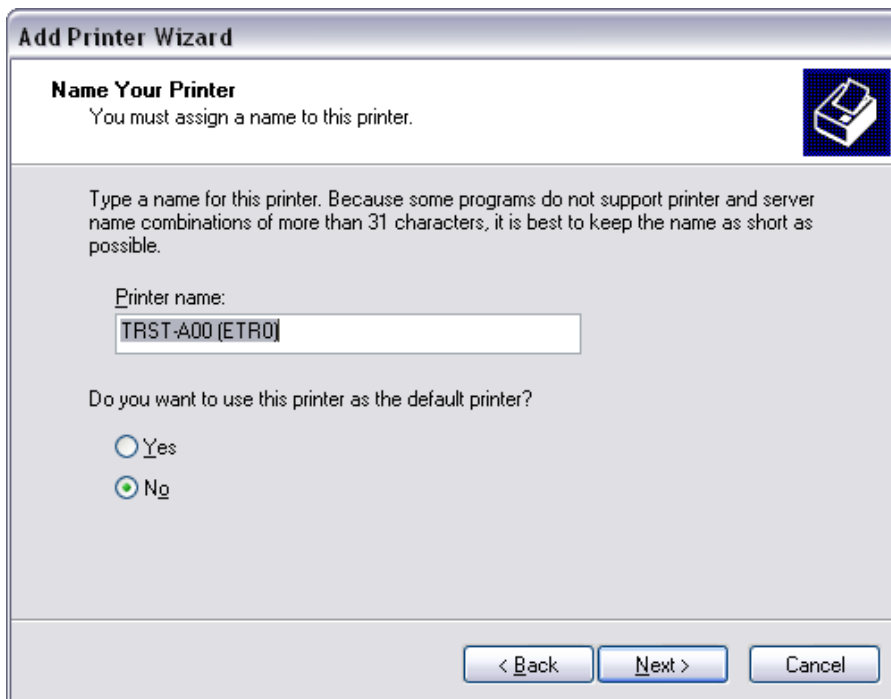
Click 'Browse' and locate the folder where the printer driver is saved.



A list of supported printers will appear. Select the printer model you want to install.
Click 'Next'.

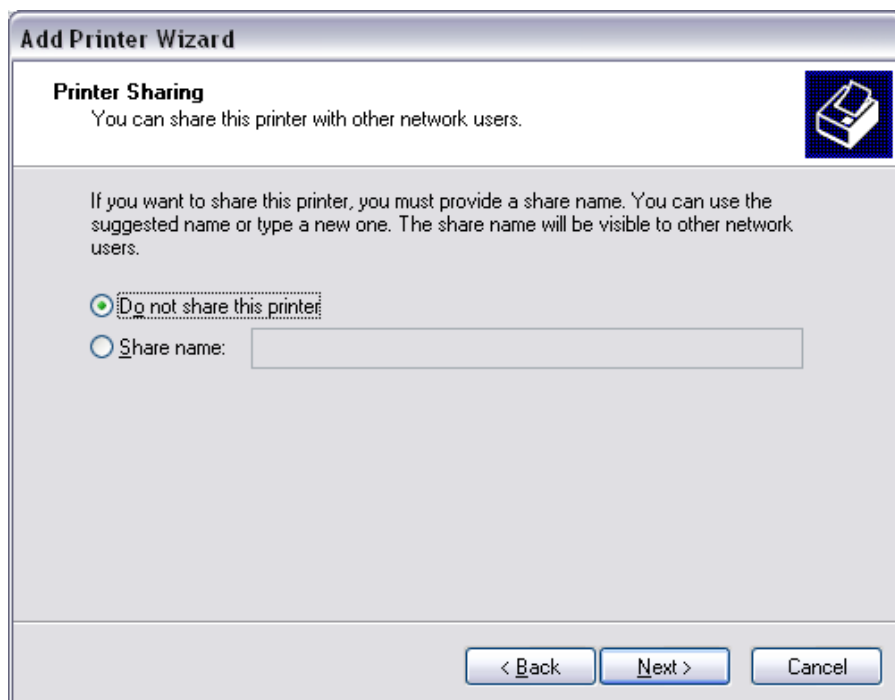


Optionally, you may modify the default printer name.
Then click 'Next'.



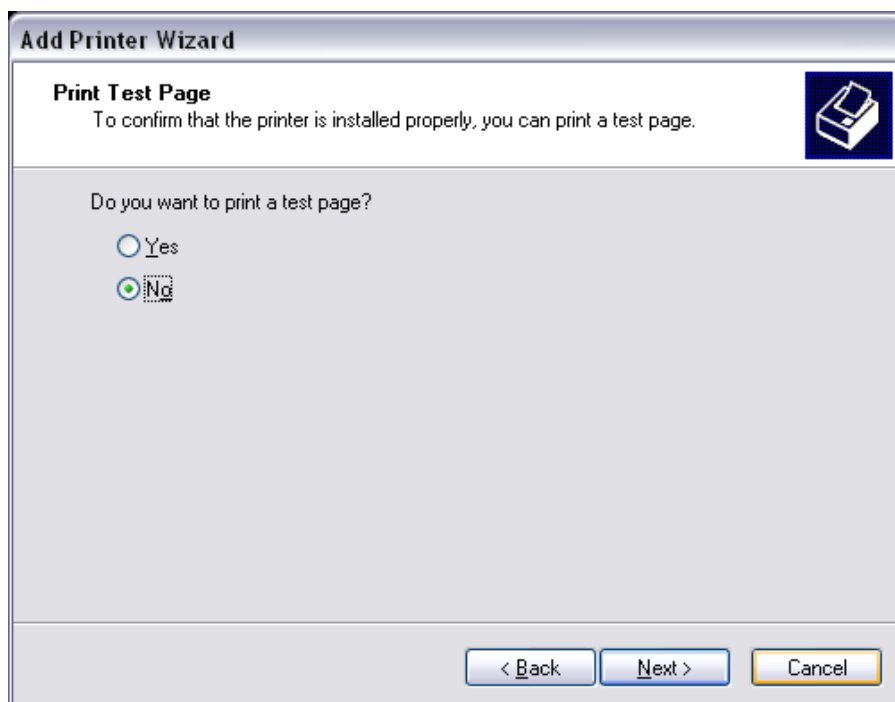
You have the option to share the printer on your network. By default, the printer is not shared.

Click 'Next' to continue.

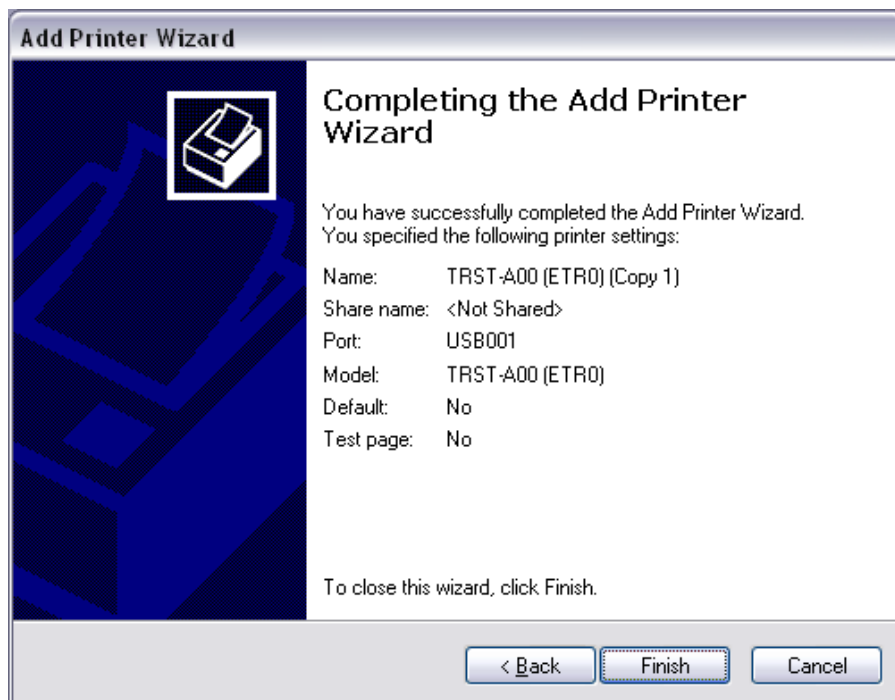


If you want to print a test page after the driver is installed, select 'Yes', otherwise, select 'No'.

Click 'Next' to continue.



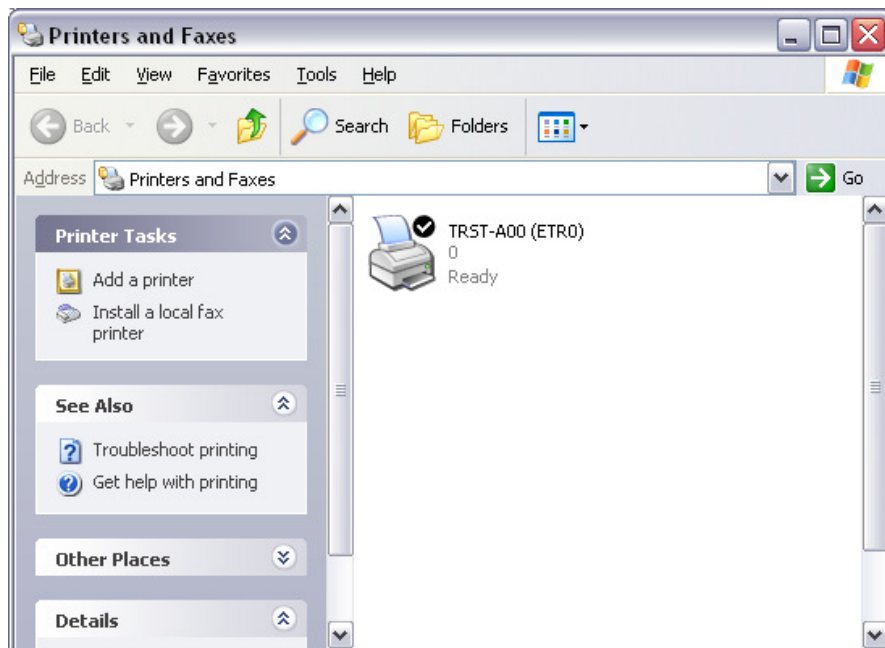
Click 'Finish' to proceed with the installation.



Click 'Continue Anyway' to proceed.

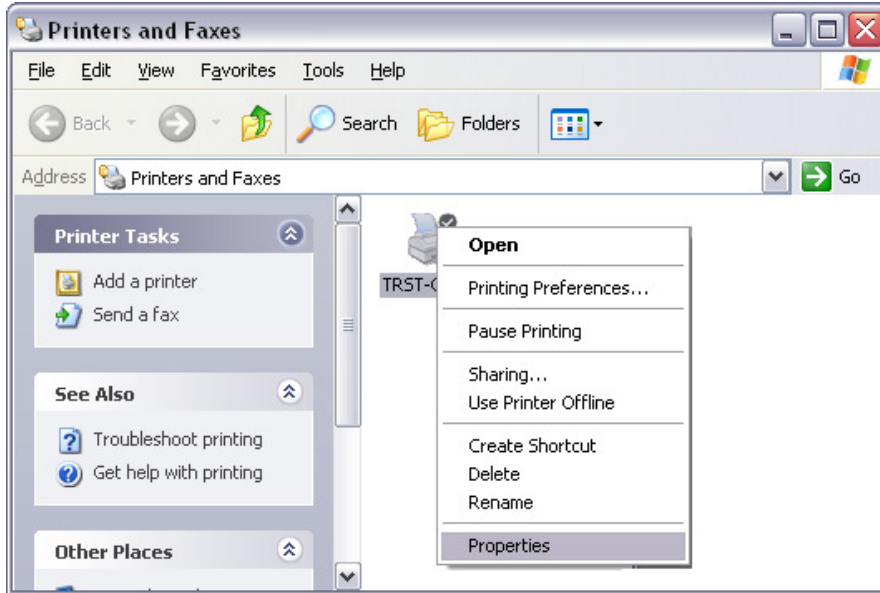


Once installation is completed, the printer icon will appear in the Printers and Faxes window.

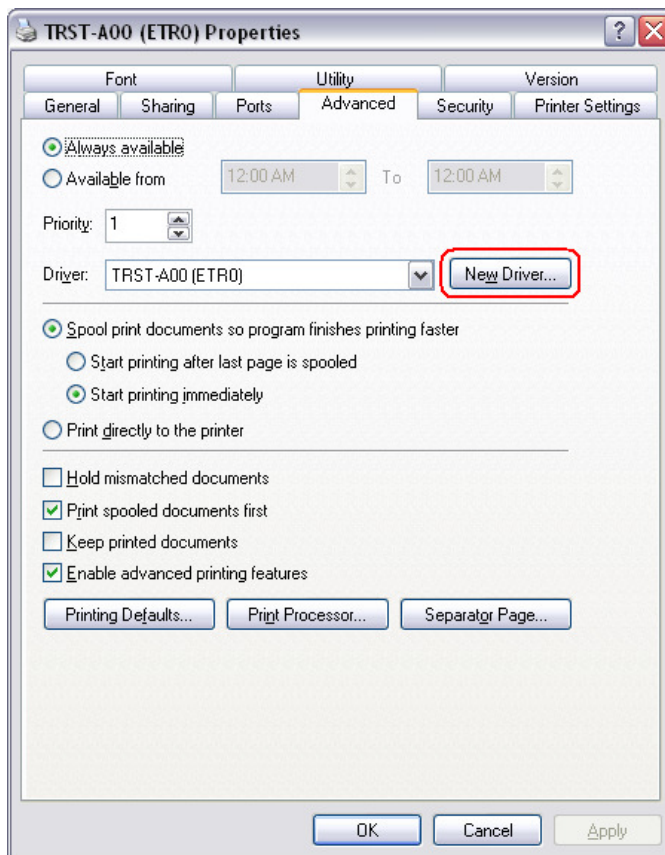


3 Update the Printer Driver in Windows XP

Open 'Printers and Faxes'. Right-click on the TRST printer icon and select 'Properties'.

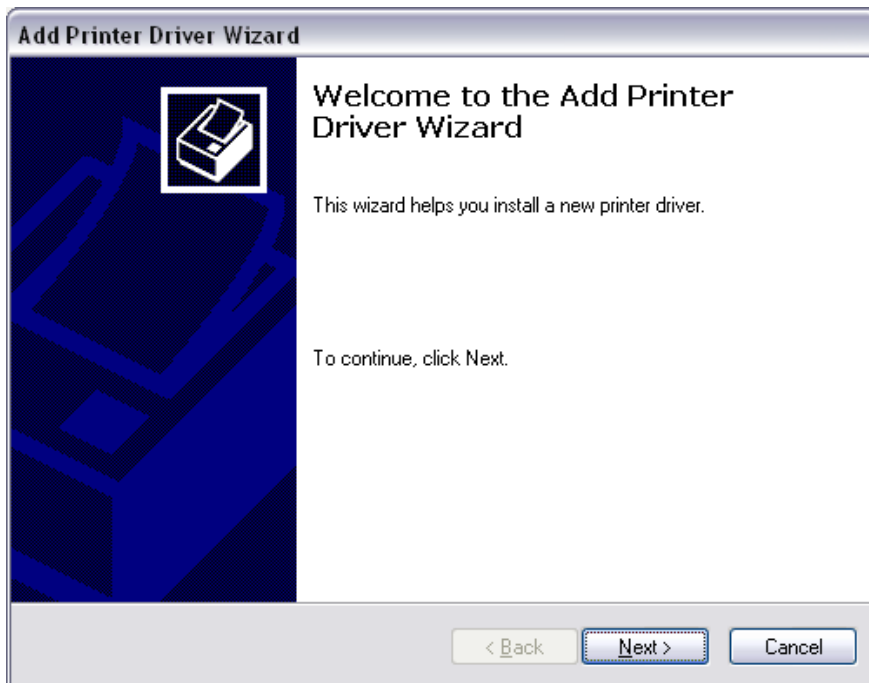


Go to the 'Advanced' tab and click 'New Driver'.

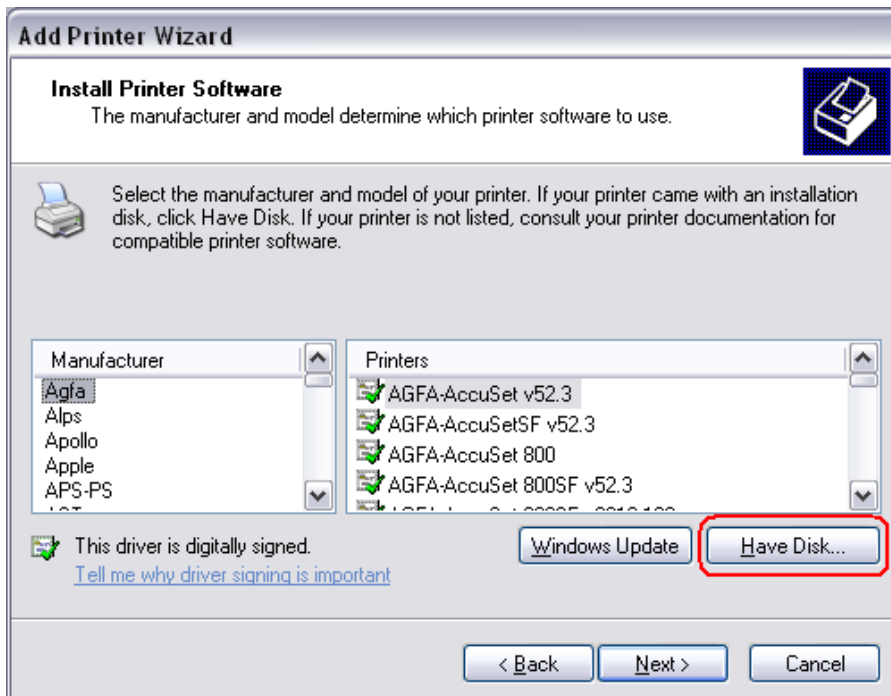


The 'Add Printer Driver Wizard' will start.

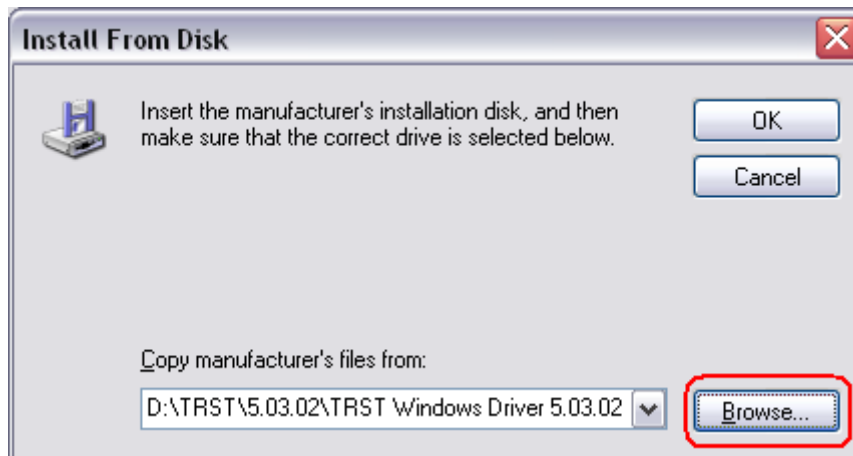
Click 'Next' to continue.



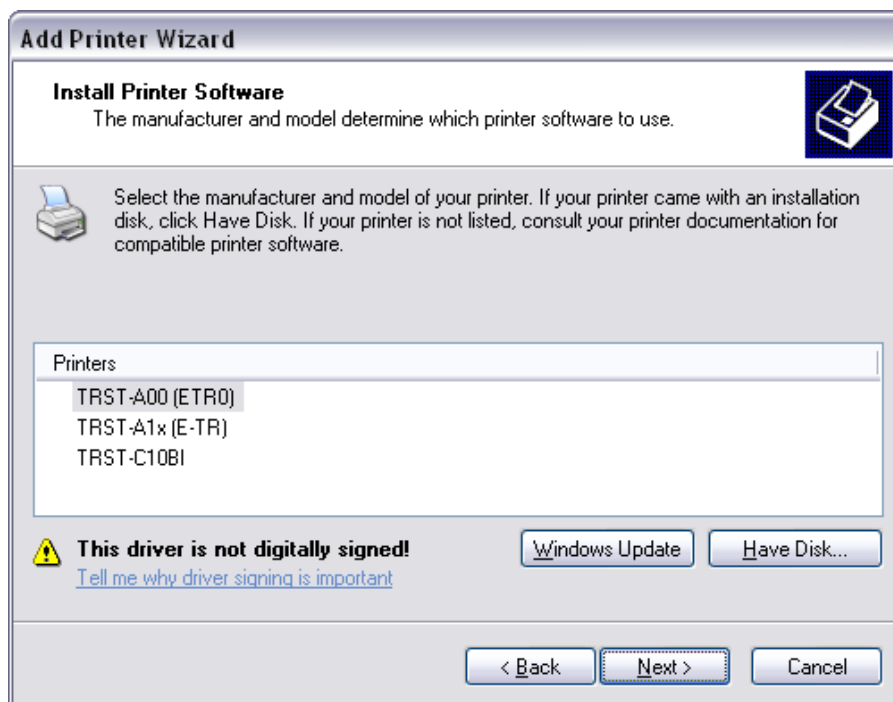
Click 'Have Disk'.



Click 'Browse' and locate the folder where the printer driver is saved.

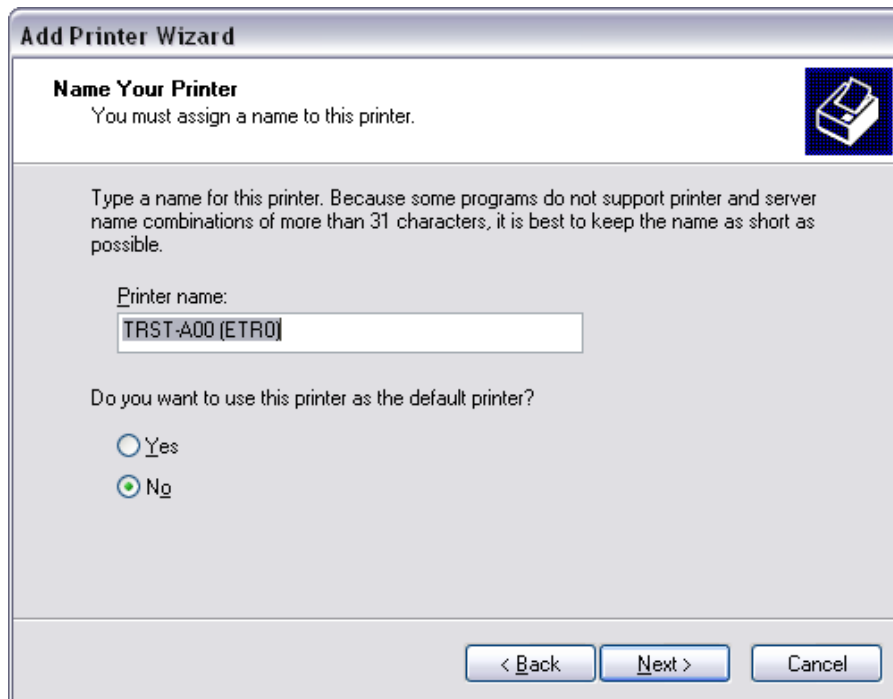


A list of supported printers will appear. Select the printer model you want to install.
Click 'Next'.



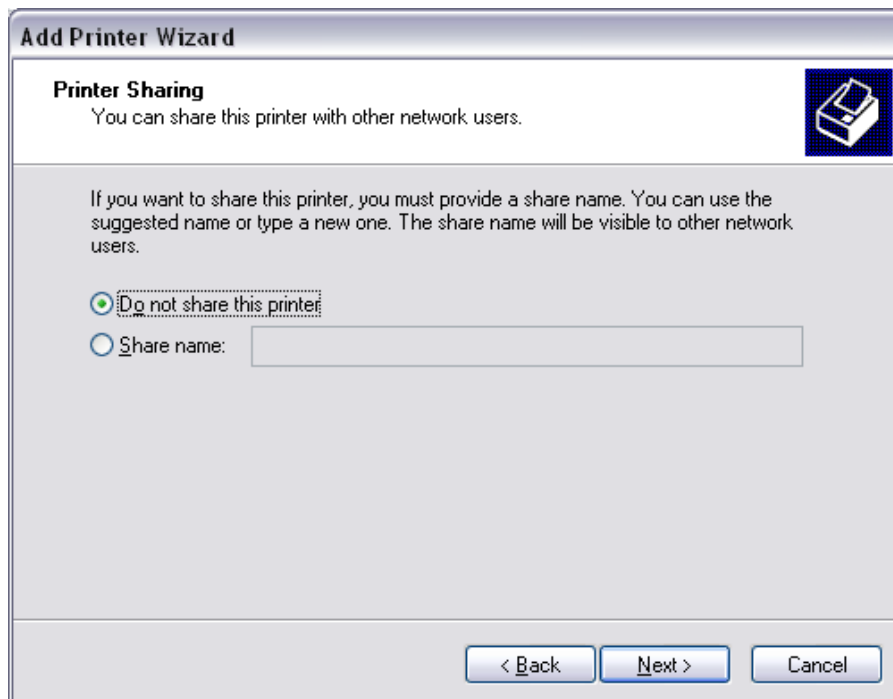
Optionally, you may modify the default printer name.

Then click 'Next'.

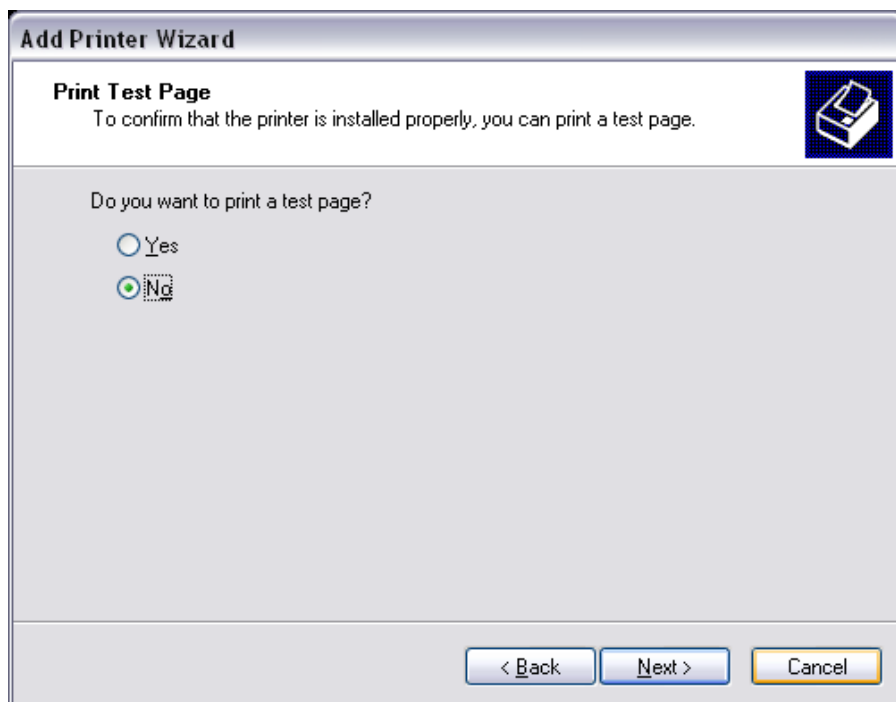


You have the option to share the printer on your network. By default, the printer is not shared.

Click 'Next' to continue.



If you want to print a test page after the driver is installed, select 'Yes', otherwise, select 'No'.
Click 'Next' to continue.



Click 'Finish' to proceed with the update.



Click 'Continue Anyway' to proceed.

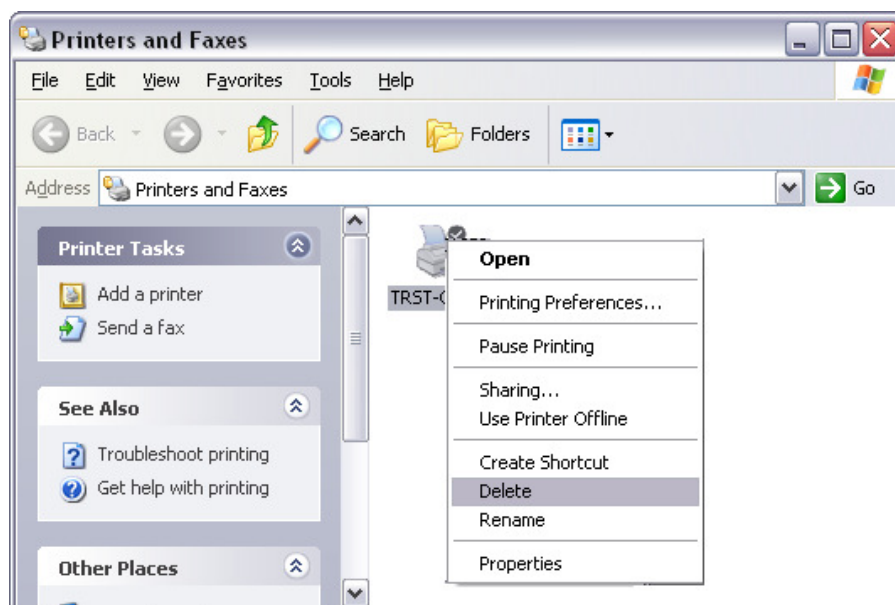


Restart the computer to successfully update the driver.

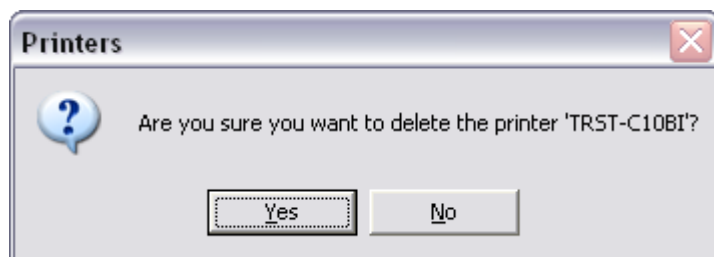
4 Uninstall the Printer Driver in Windows XP

Open 'Printers and Faxes'.

Right-click on the printer icon and select 'Delete'.

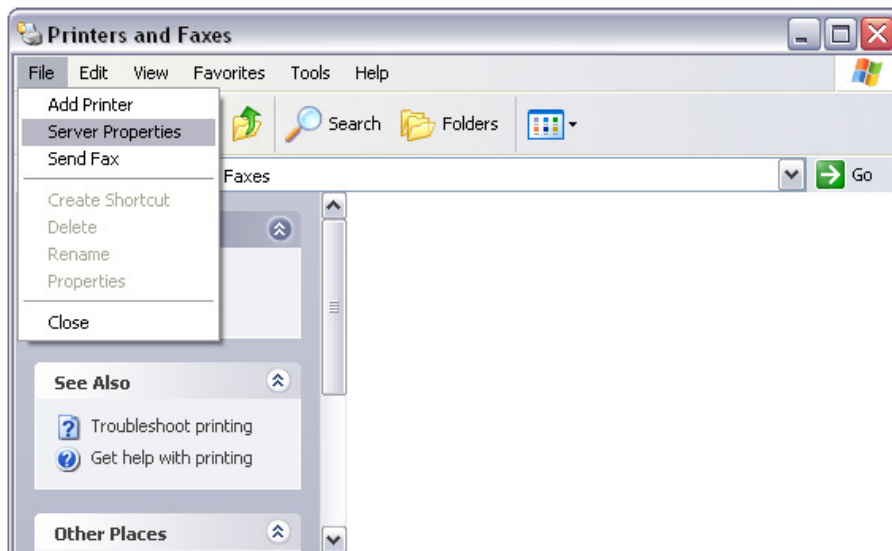


Click 'Yes' to confirm.



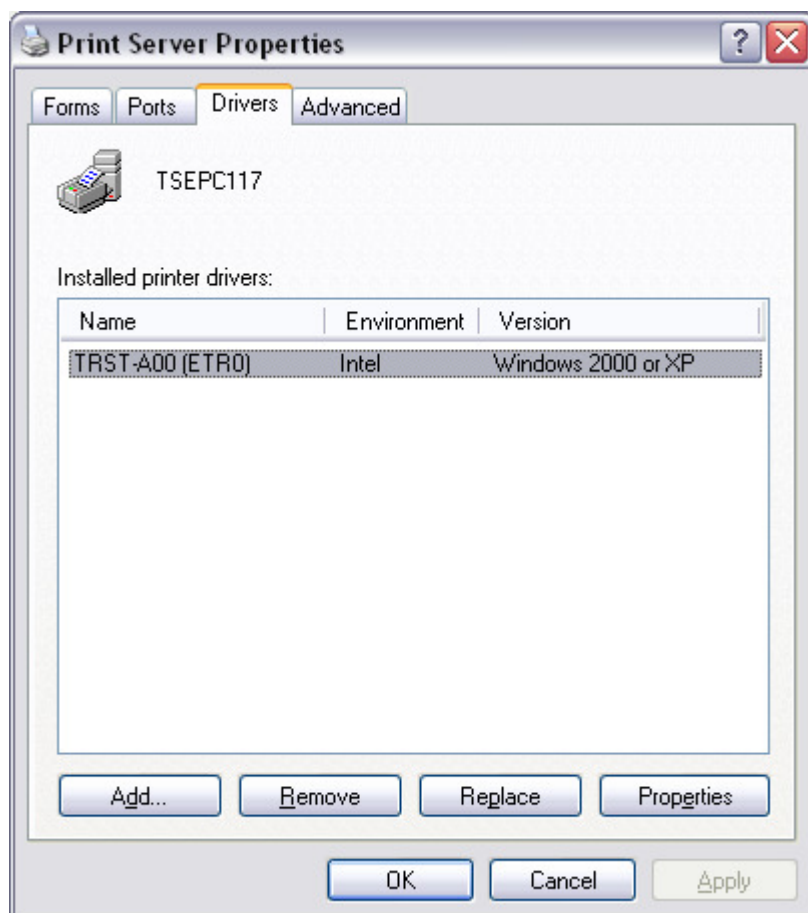
The printer icon is removed.

Go to the 'File' menu and select 'Server Properties'.

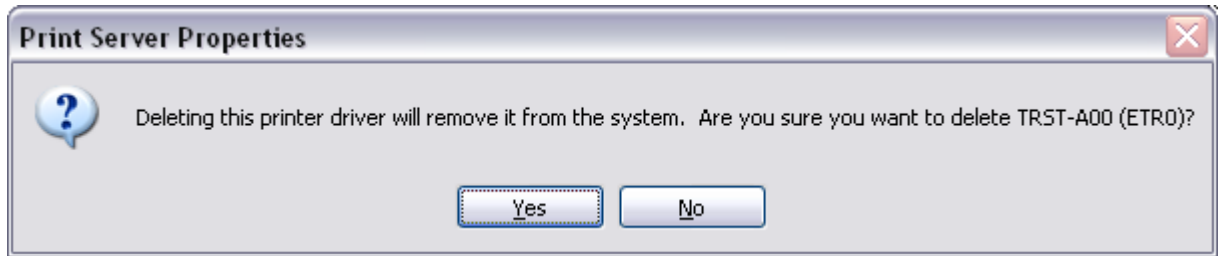


Go to the 'Drivers' tab and select the installed printer.

Click 'Remove'.



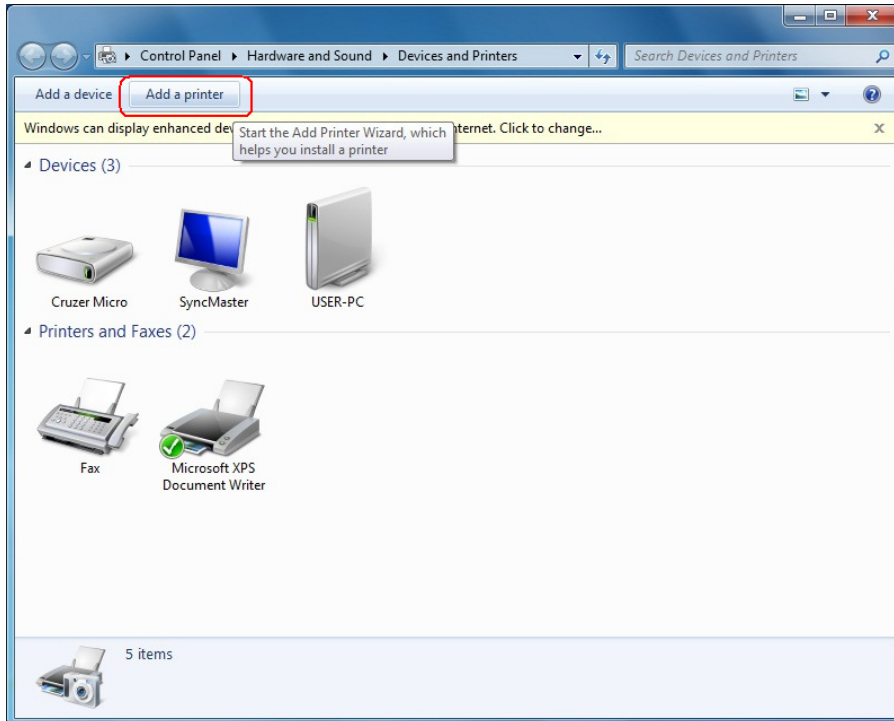
Click 'Yes' to confirm.



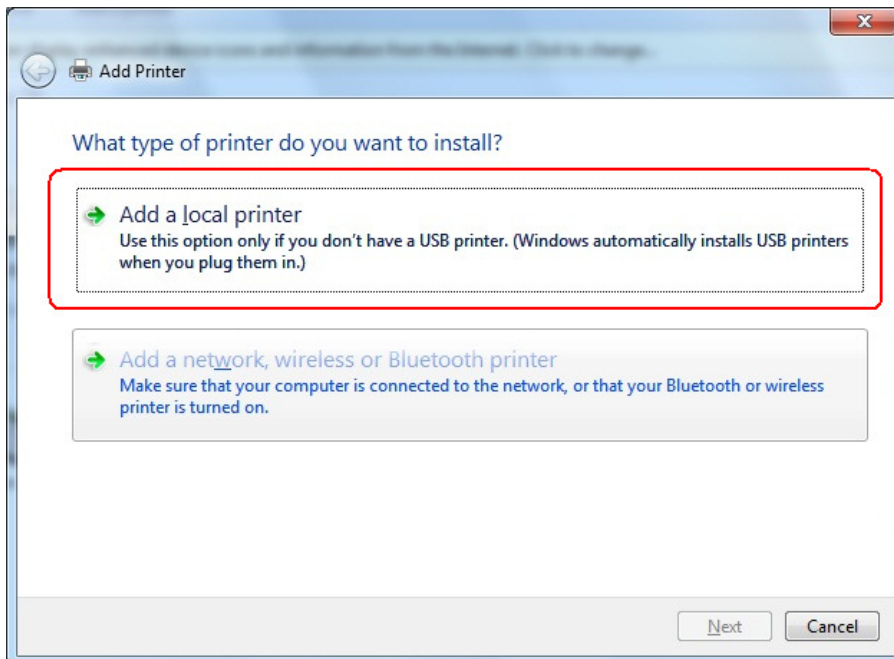
The printer driver has been successfully removed from your system.

5 Install the Printer Driver in Windows 7

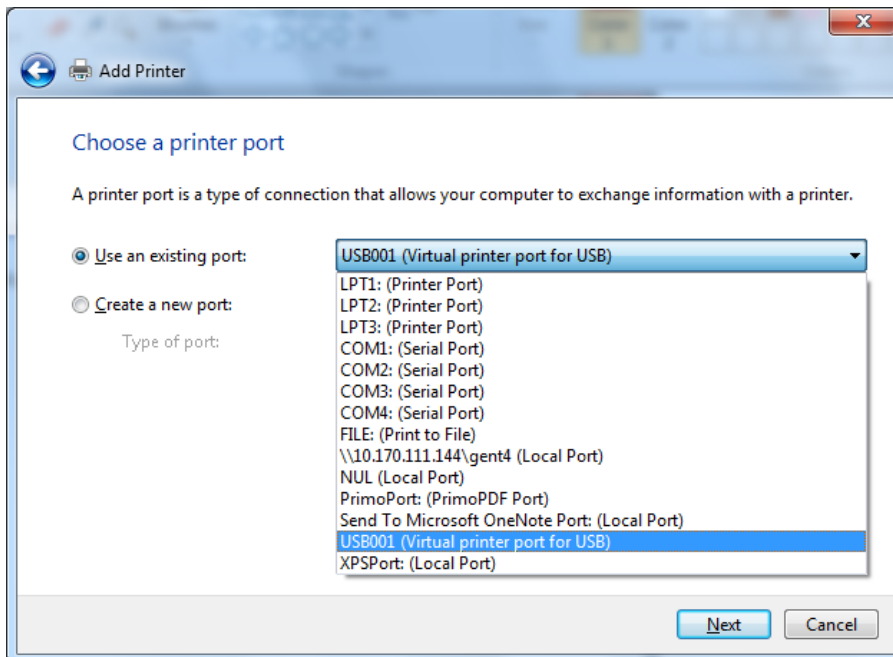
Open 'Devices and Printers' and click the 'Add a printer' button.



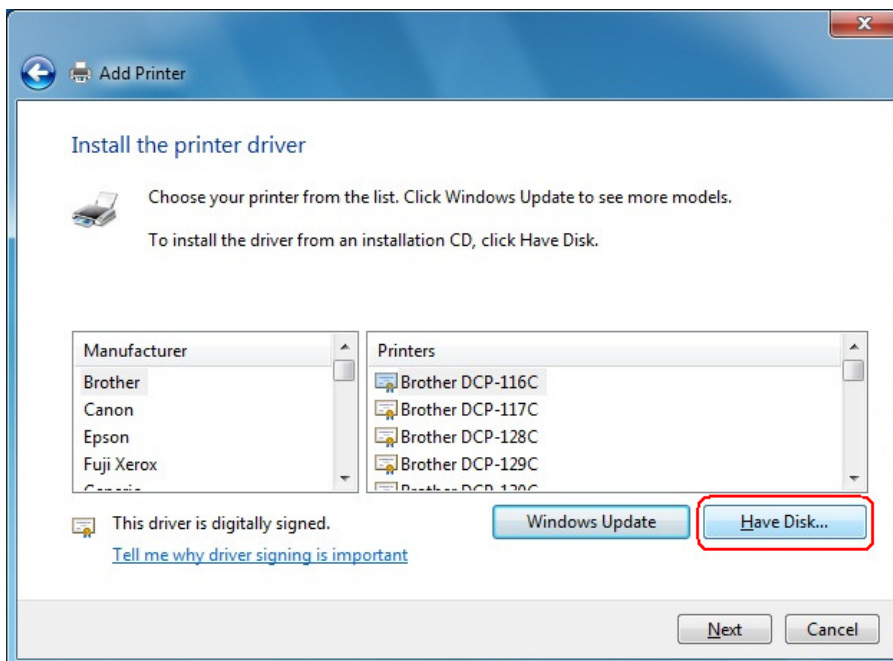
Select 'Add a local printer' then click 'Next'



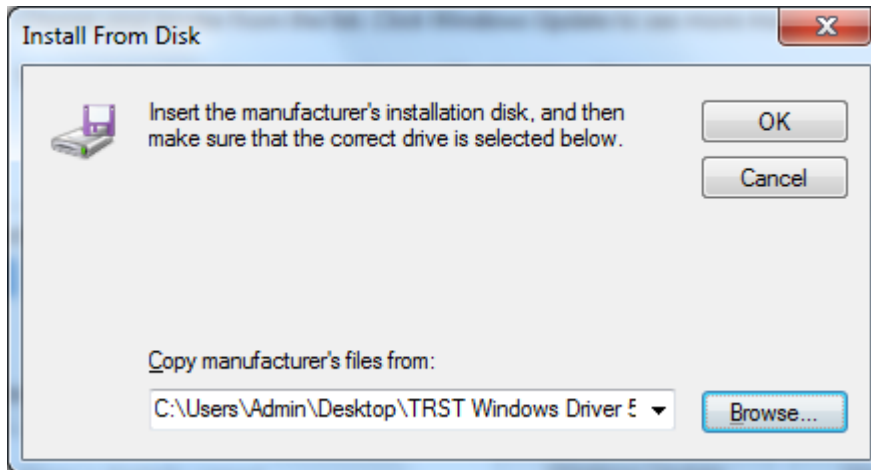
Select 'Use the following port' option and select the appropriate port from the dropdown list.
Then click 'Next'.



Click 'Have Disk'.

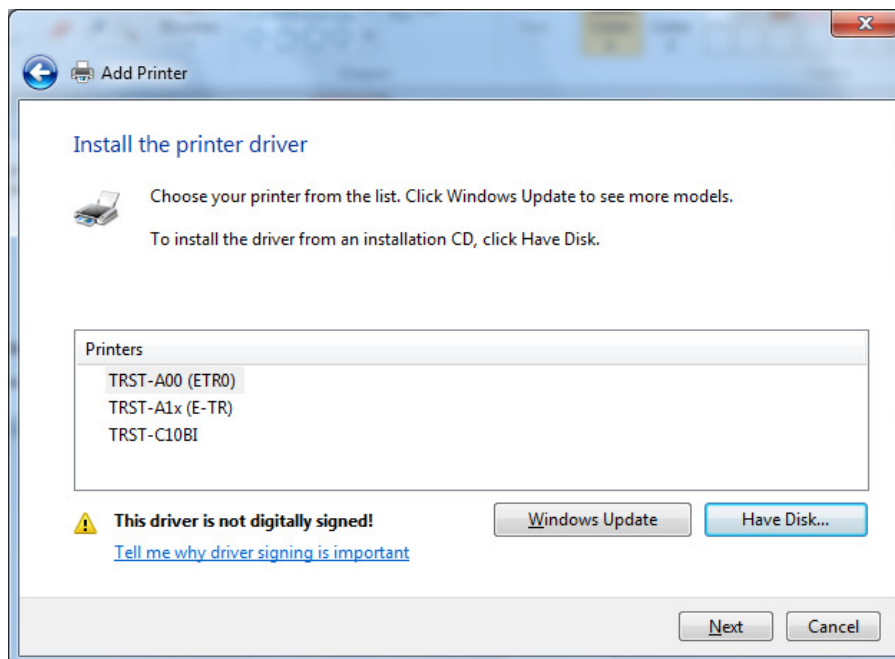


Click 'Browse' and locate the folder where the printer driver is saved.



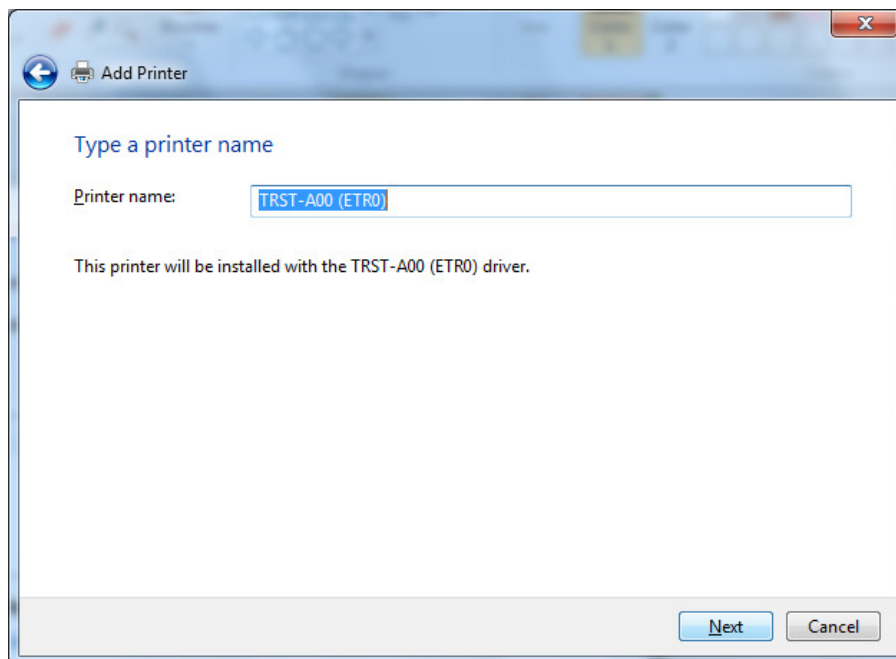
A list of supported printers will appear. Select the printer model you want to install.

Click 'Next'.

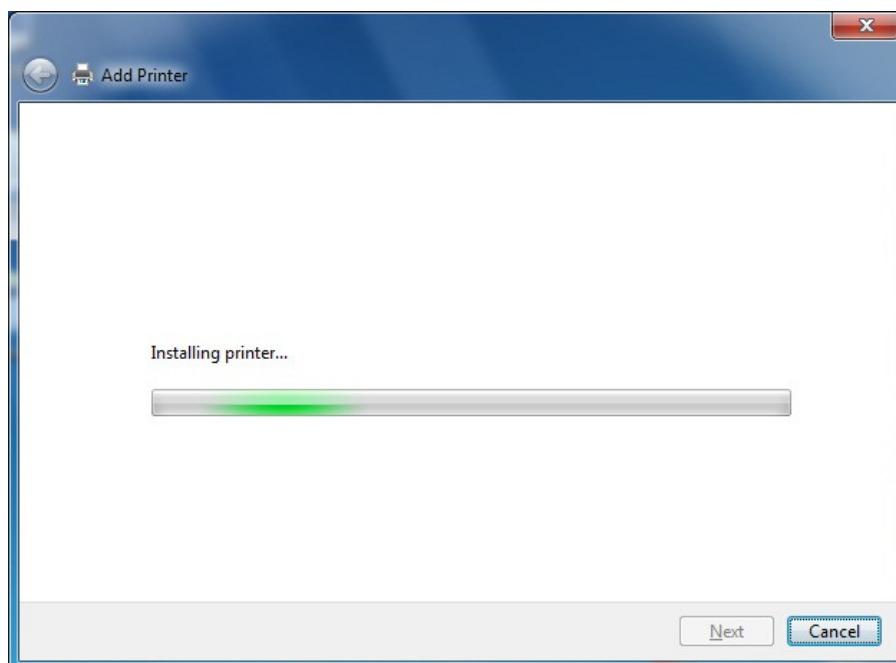


Optionally, you may modify the default printer name.

Then click 'Next'.

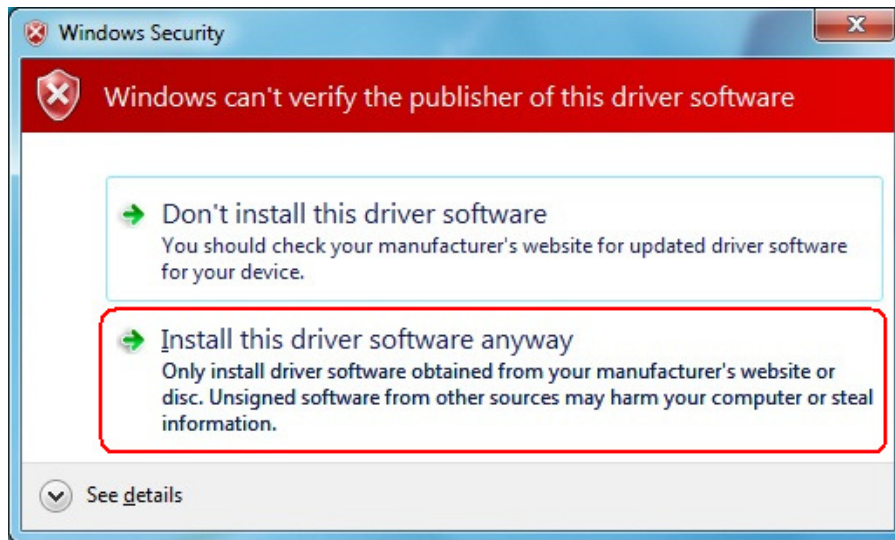


The following window shows that the printer driver is being installed in your system.



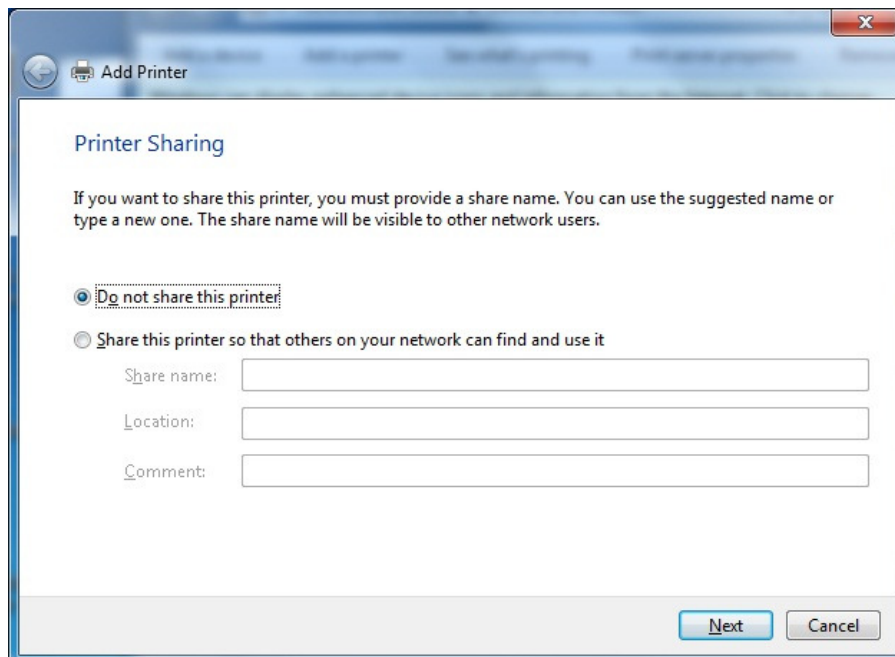
In the middle of the installation, the following window pops up.

Click 'Install this driver software anyway' to proceed with the installation.



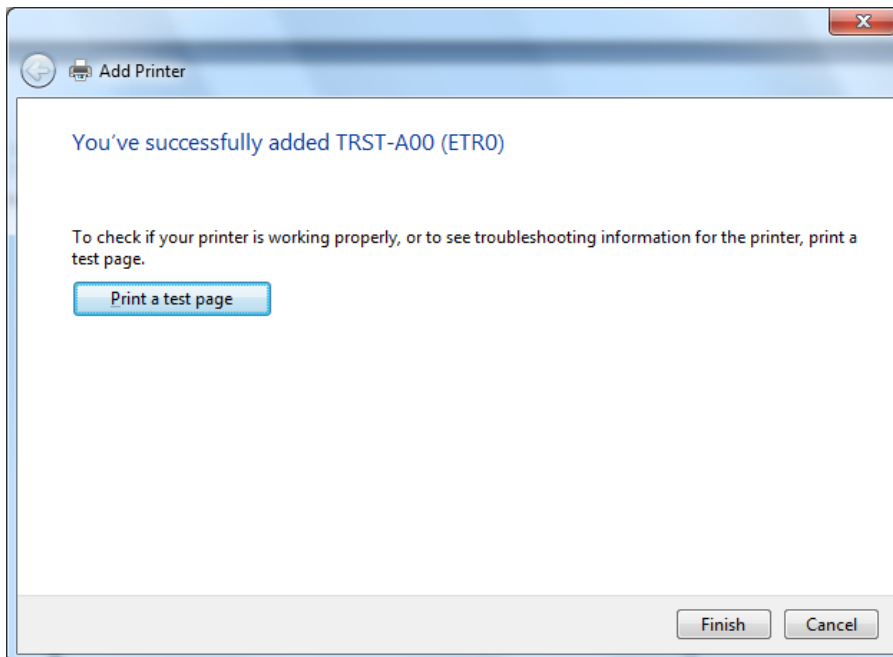
You have the option to share the printer on your network. By default, the printer is not shared.

Click 'Next' to continue.

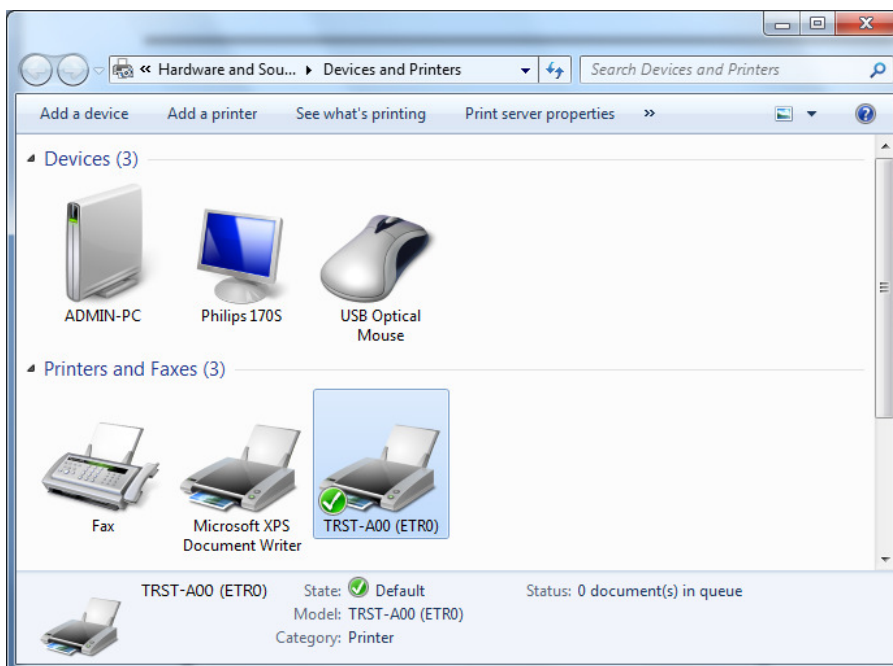


You may print a test page by clicking 'Print a test page' button.

Click 'Finish' to complete the installation.

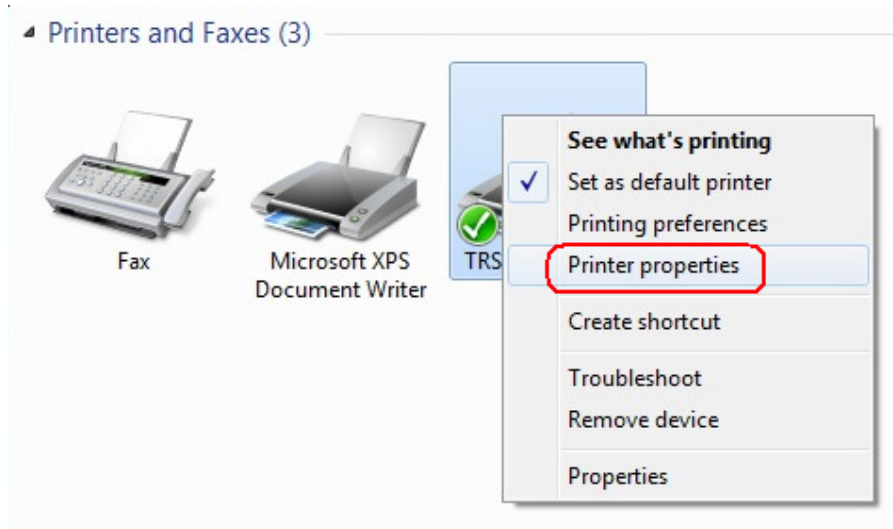


The printer icon will appear on the 'Devices and Printers' window.

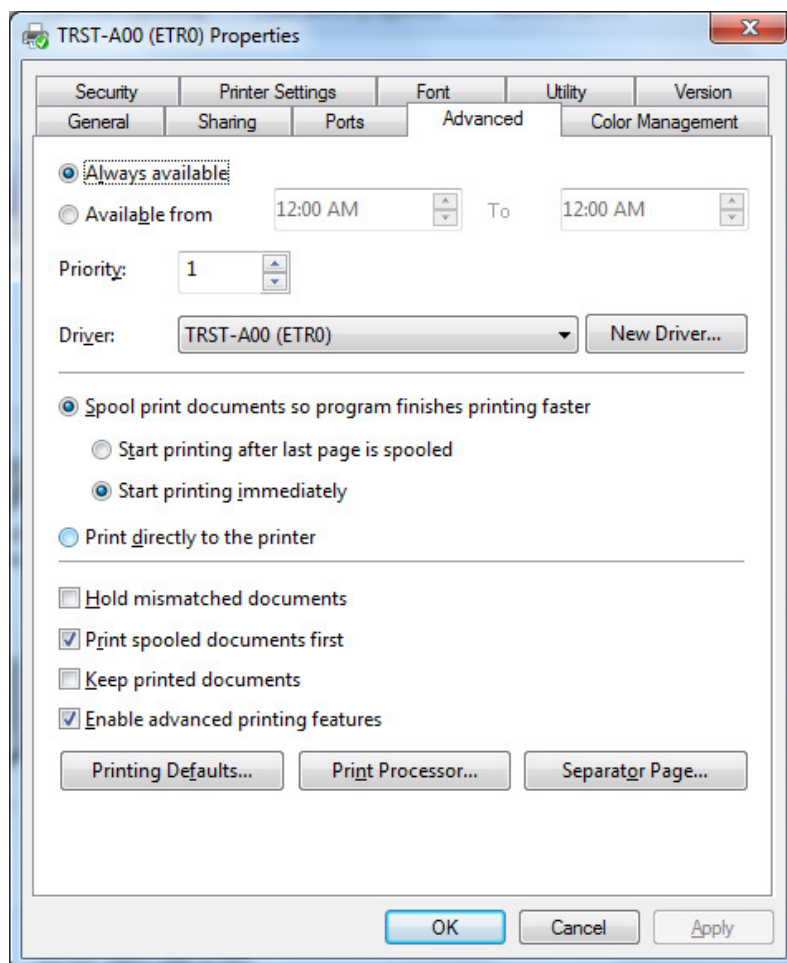


6 Update the Printer Driver in Windows 7

Open 'Devices and Printers'. Right-click on the printer icon and select 'Printer Properties'.

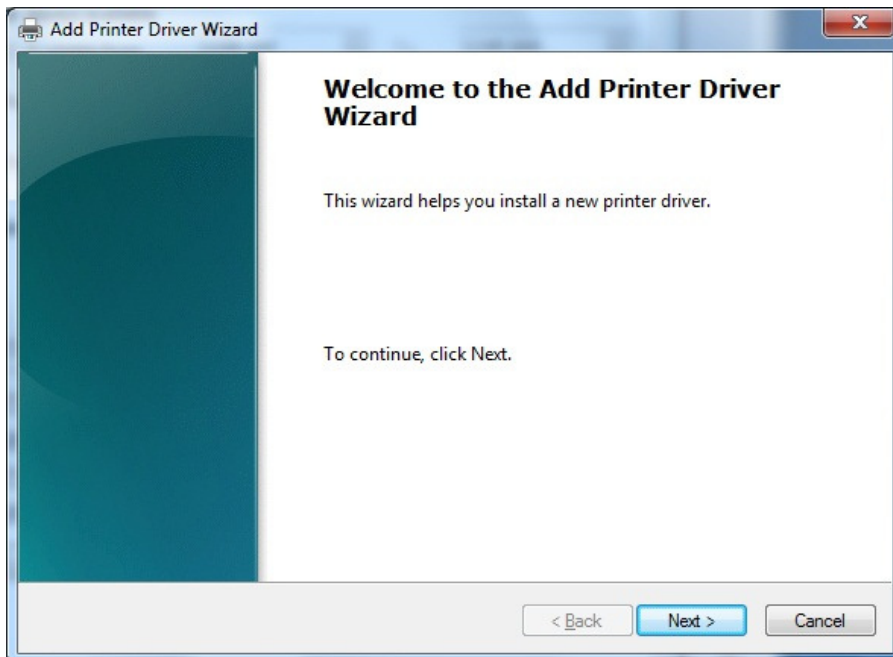


Go to the 'Advanced' tab and click 'New Driver'.

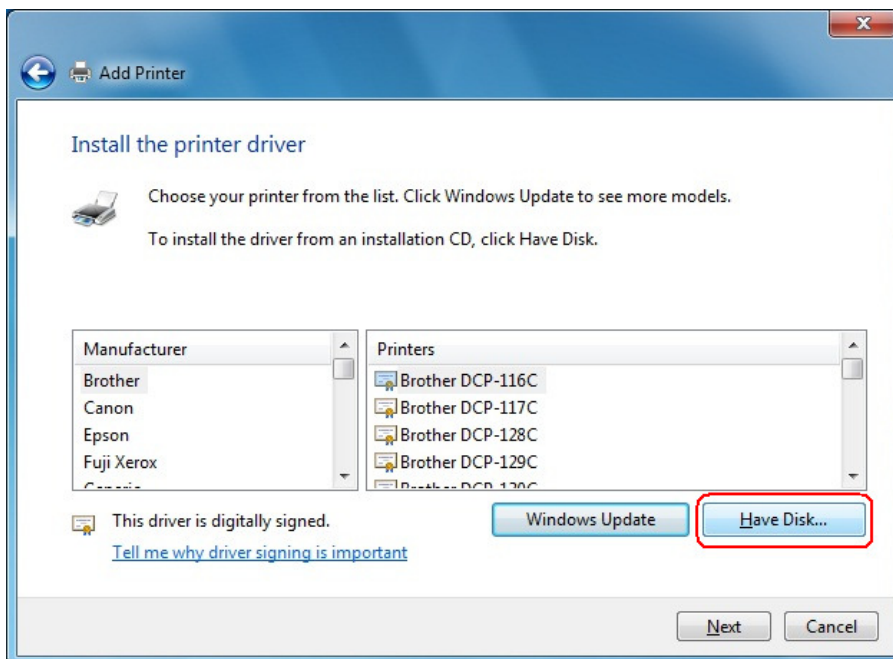


The 'Add Printer Driver Wizard' will start.

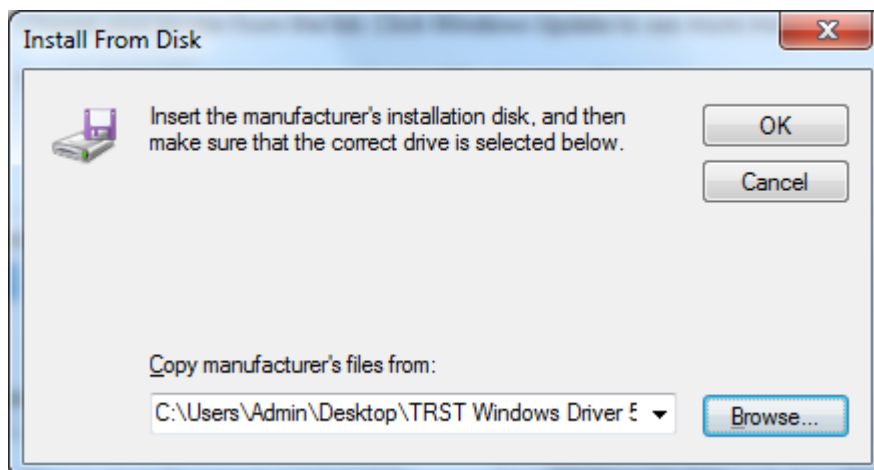
Click 'Next' to continue.



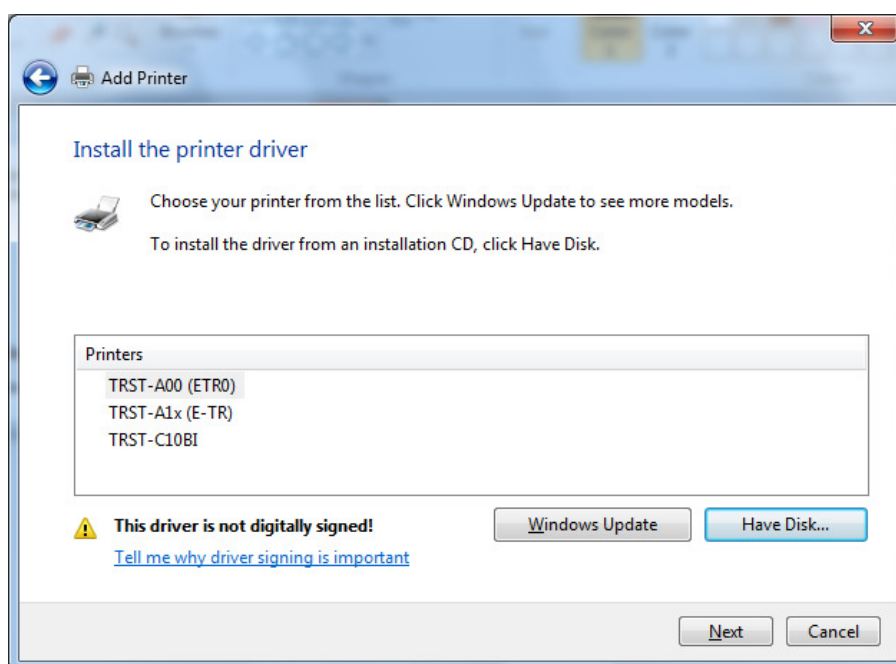
Click 'Have Disk'.



Click 'Browse' and locate the folder where the printer driver is saved.

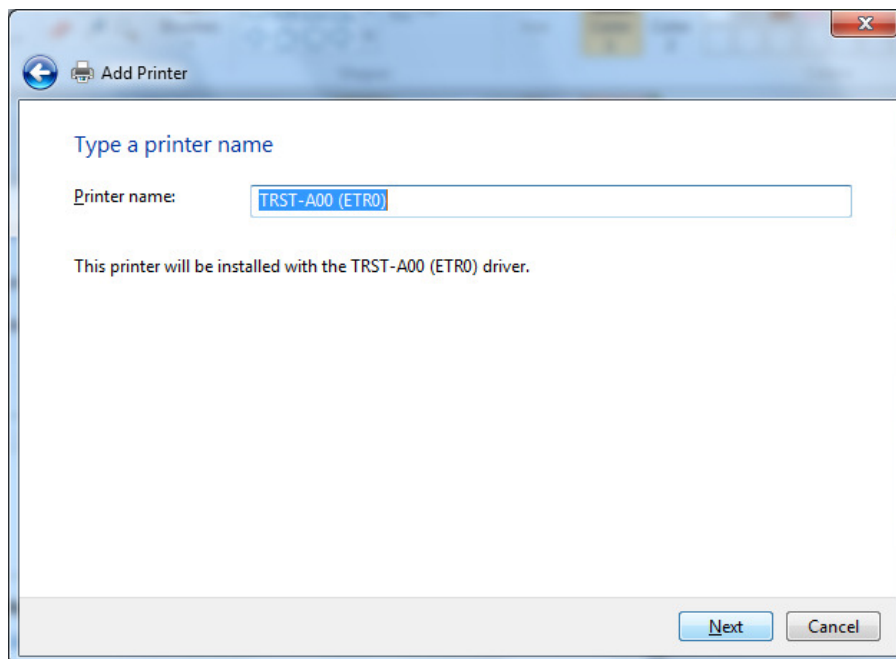


A list of supported printers will appear. Select the printer model you want to install.
Click 'Next'.

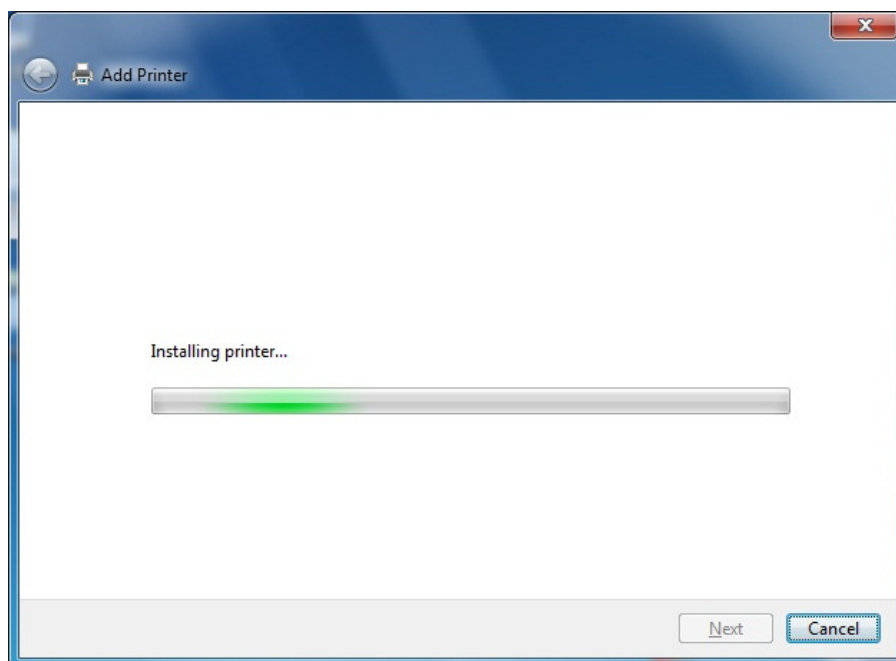


Optionally, you may modify the default printer name.

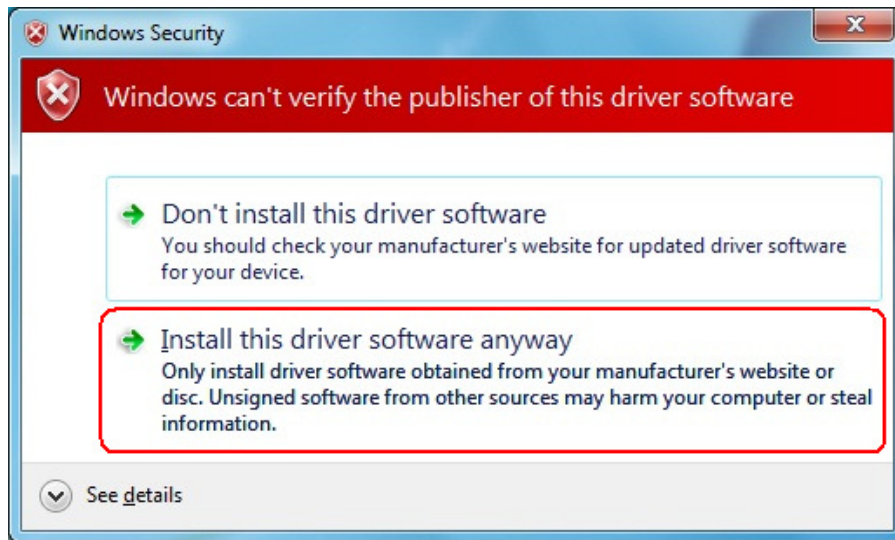
Then click 'Next'.



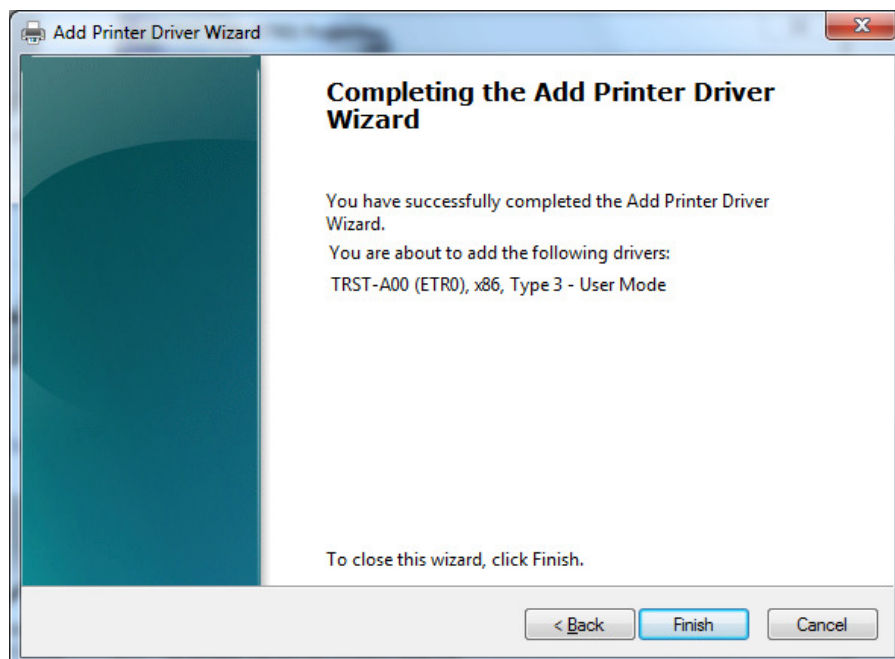
The following window shows that the printer driver is being installed in your system.



In the middle of the installation, the following window pops up. Click 'Install this driver software anyway' to proceed with the installation.



Click 'Finish' to complete the installation.

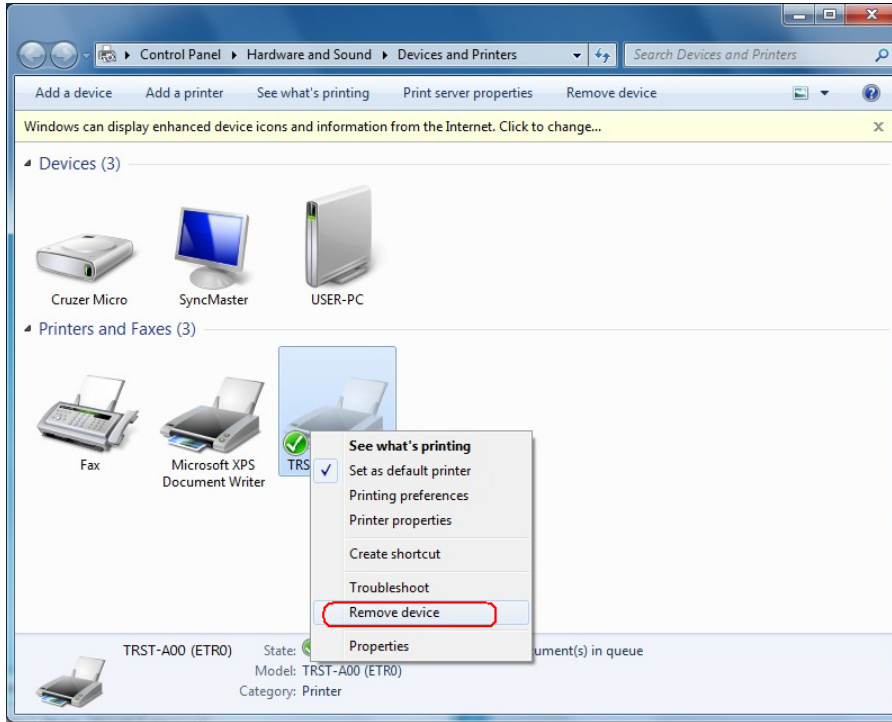


Restart the computer to successfully update the driver.

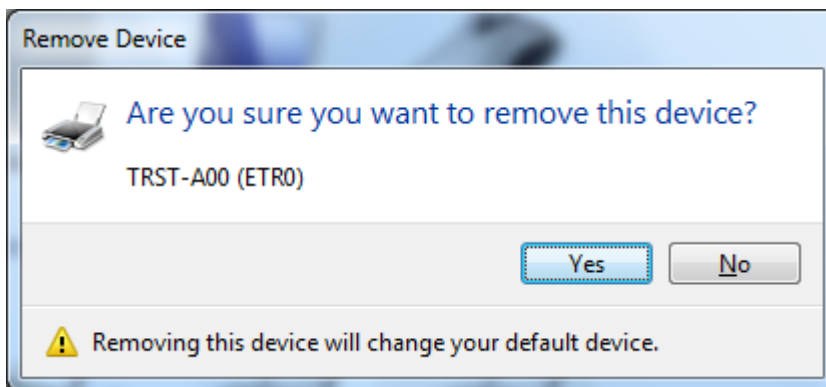
7 Uninstall the Printer Driver in Windows 7

Open the 'Devices and Printers' folder.

Right-click on the printer icon and select 'Remove device'.



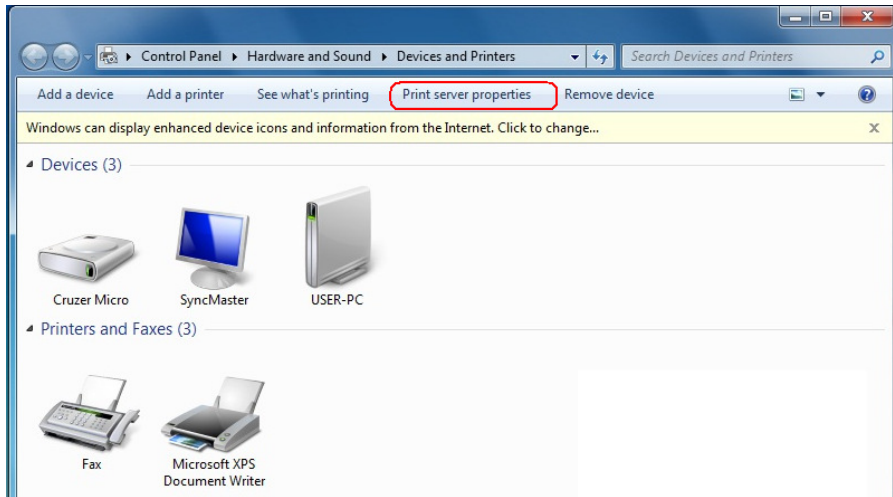
Click 'Yes' to confirm.



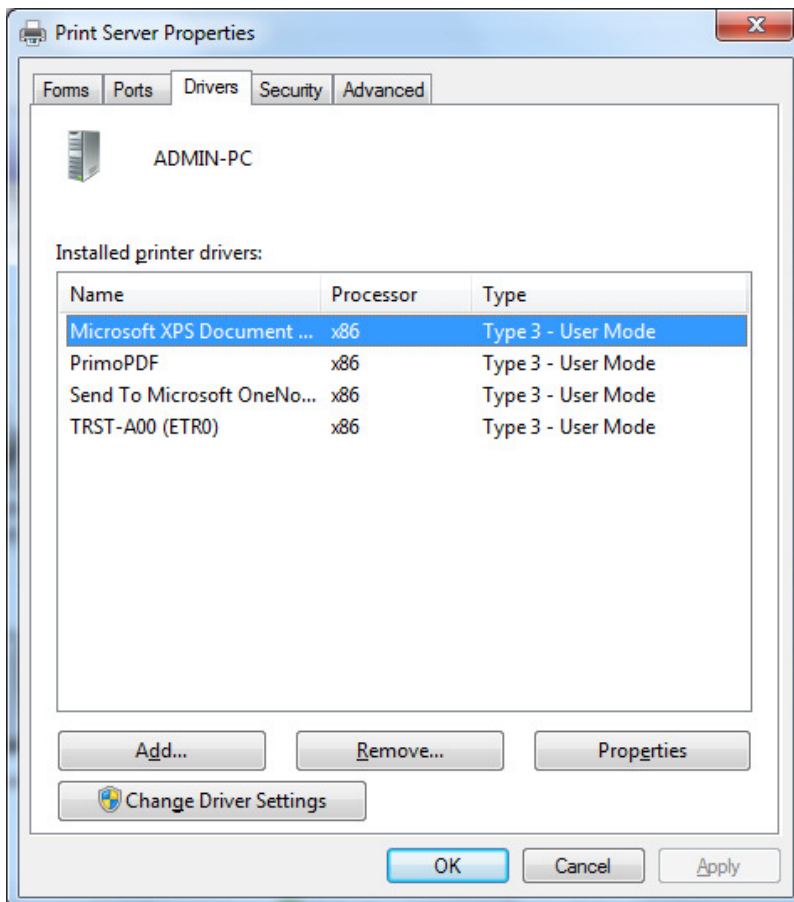
The printer icon is removed.

Select any printer icon (example, Microsoft XPS Document Writer) to display additional options at the top portion of the window.

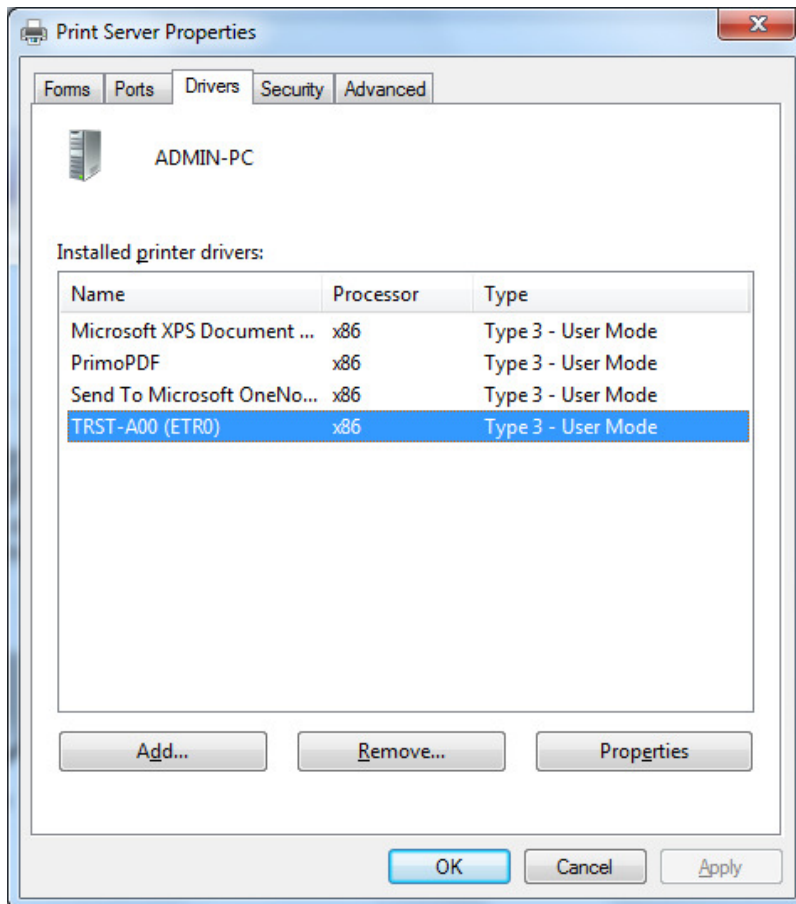
Click 'Print server properties'.



Go to the 'Drivers' tab. If the User Account Control is set to default, click the 'Change the Driver Settings' button.



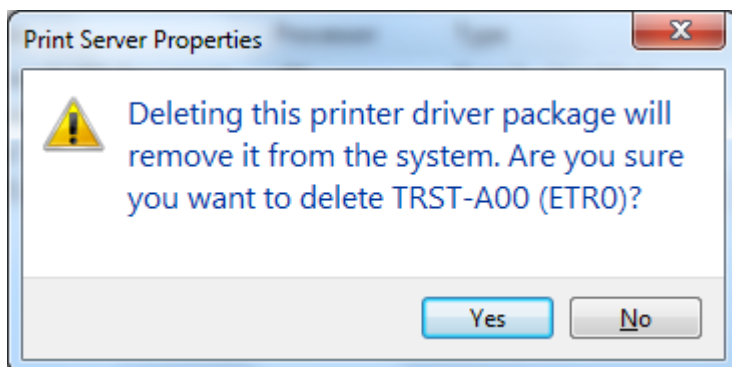
Select the installed printer then click 'Remove'.



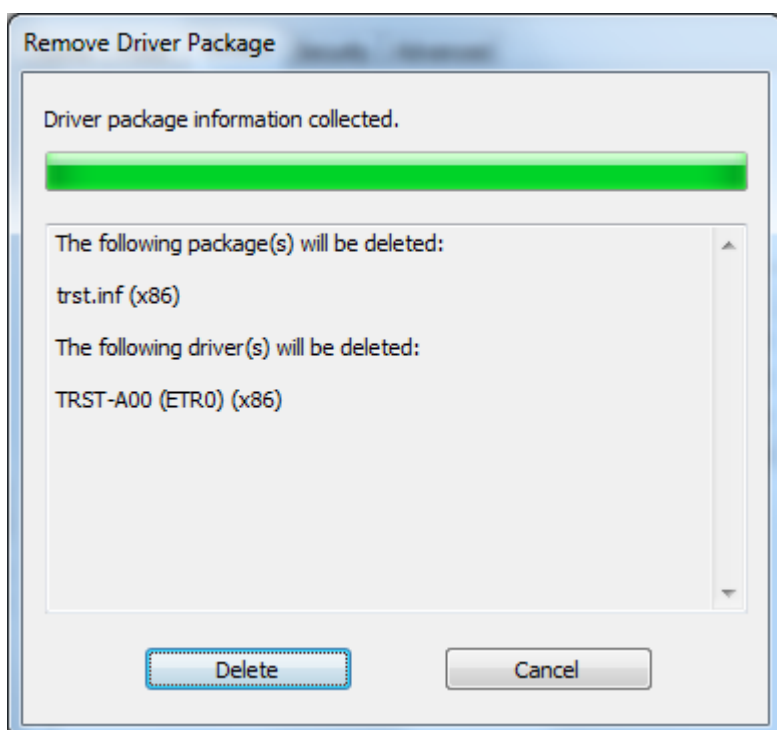
Select the 'Remove driver and driver package' option then click 'OK'.



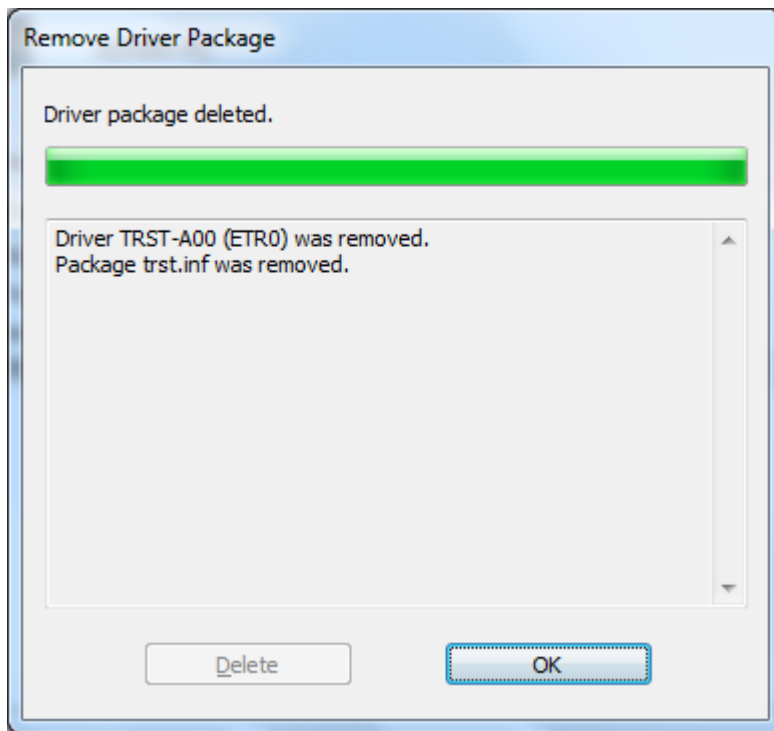
Click 'Yes' to confirm.



Click 'Delete' to continue.



Click 'OK' to finish.



The printer driver has been successfully removed from your system.

8 Examples for a receipt printing

8.1 Receipt printing

The diagram illustrates a receipt layout with various settings indicated by arrows:

- 5.1.2 Document Setting**: Points to the overall receipt area.
- 5.1.3 Logo Setting**: Points to the large 'LOGO' text.
- 5.1.4 Font Setting**: Points to the store address text.
- 5.1.5 Barcode Setting**: Points to the barcode and its associated number.
- 5.1.6 ControlA Font setting**: Points to the 'Thanks For Shopping' text.

The receipt content is as follows:

LOGO

The Home Store
1234 Your Street
Anywhere, USA 12345

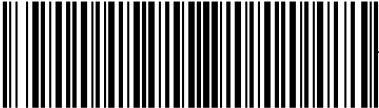
SALE 404 123-4567 04 80936
1234 07/15/09 05:29 PM

NOODLE SOUPE	002420000130	1.49 K
CHICKEN	004135853129	0.89 K
CORN STARCH	001231243010	1.19 K
POPCORN	002700048414	2.50 K
GRIPNSPRERGO	007785522284	7.92 E
MIXED NUTS	002900007184	2.87 K
CANNED AIR	007947454608	3.94 E
CHK BOTTLE LON	004125875156	1.60 K

■
■
■
■

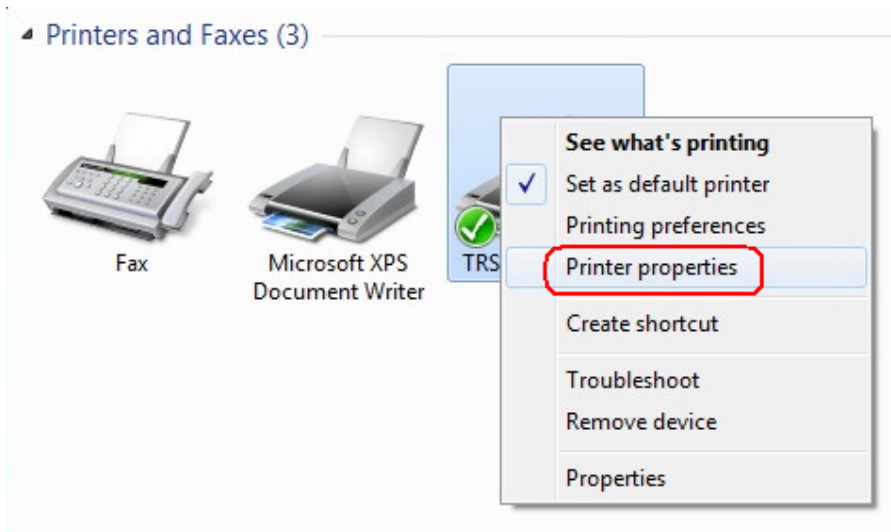
CHAMPAGNE	005672330785	10.43 E
COFFEE	002212340484	0.81 K
MILK	001251700860	3.18 E

SUBTOTAL 430.07
TAX 25.85
TOTAL 455.92
CASH 500.00
CHANGE 44.88

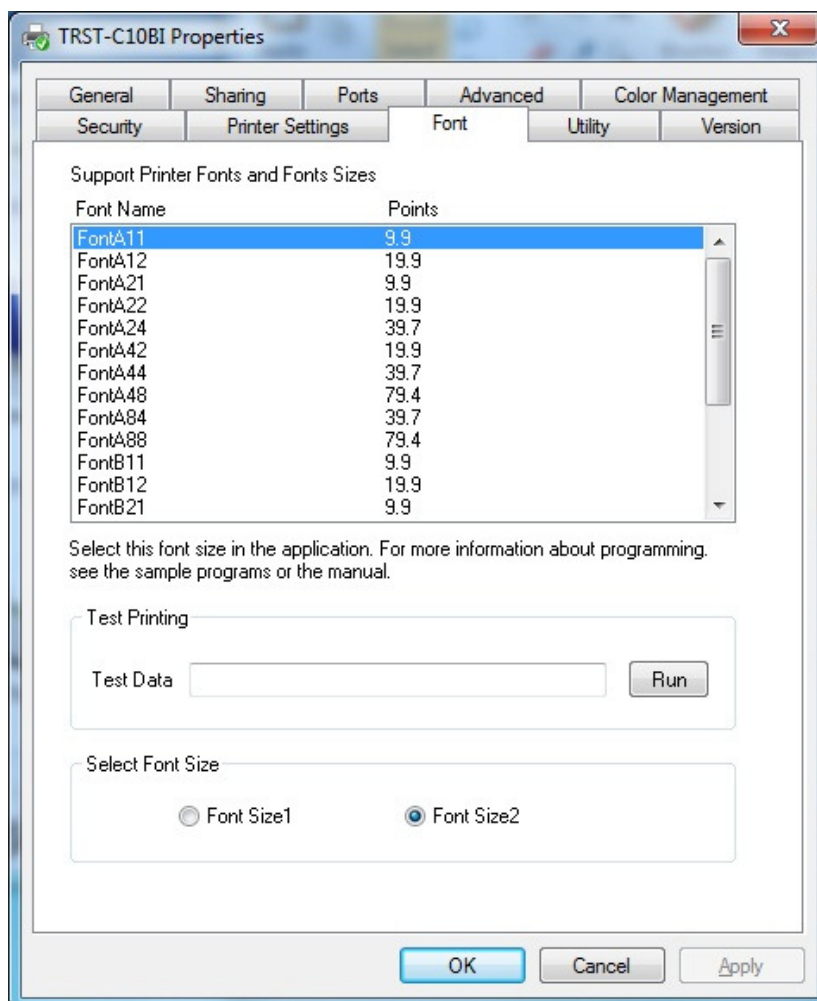

0123456789123

Thanks For Shopping
At the Home Store
Lowest Prices

- 1) Right-click on the "TRST-C10BI" printer icon and select "Printer properties".

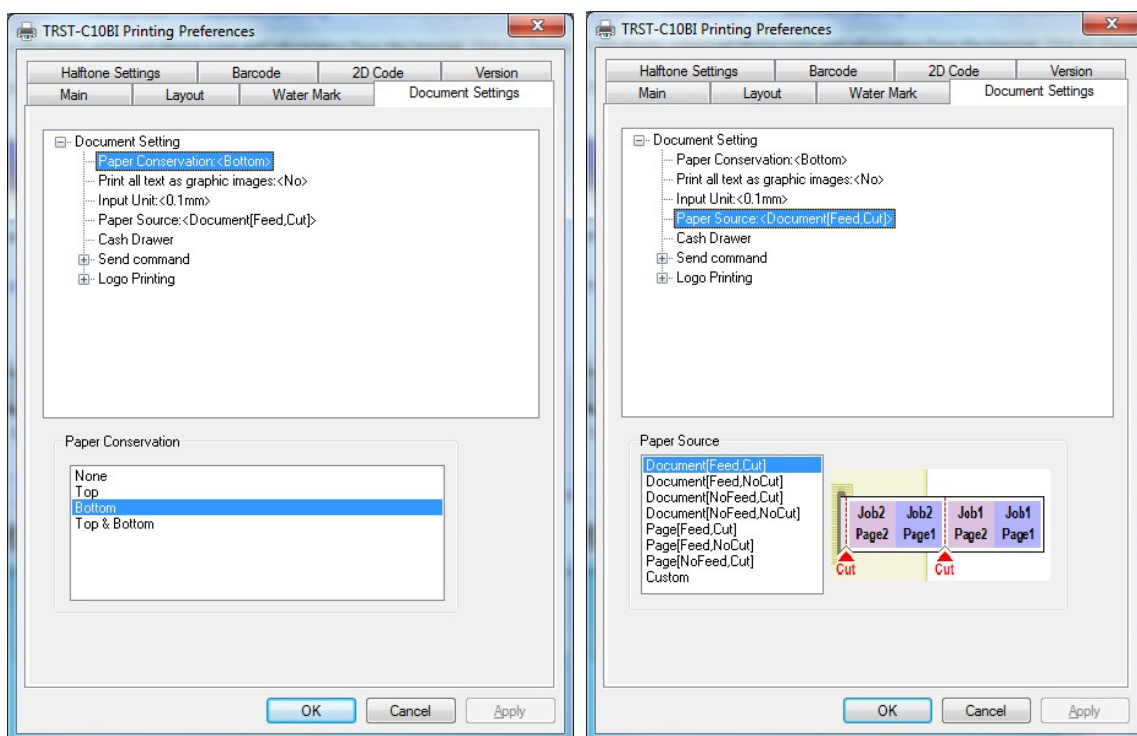


- 2) Click **Font** tab. By default, Font Size 2 is selected. You may opt to select Font Size 1 then click "OK".



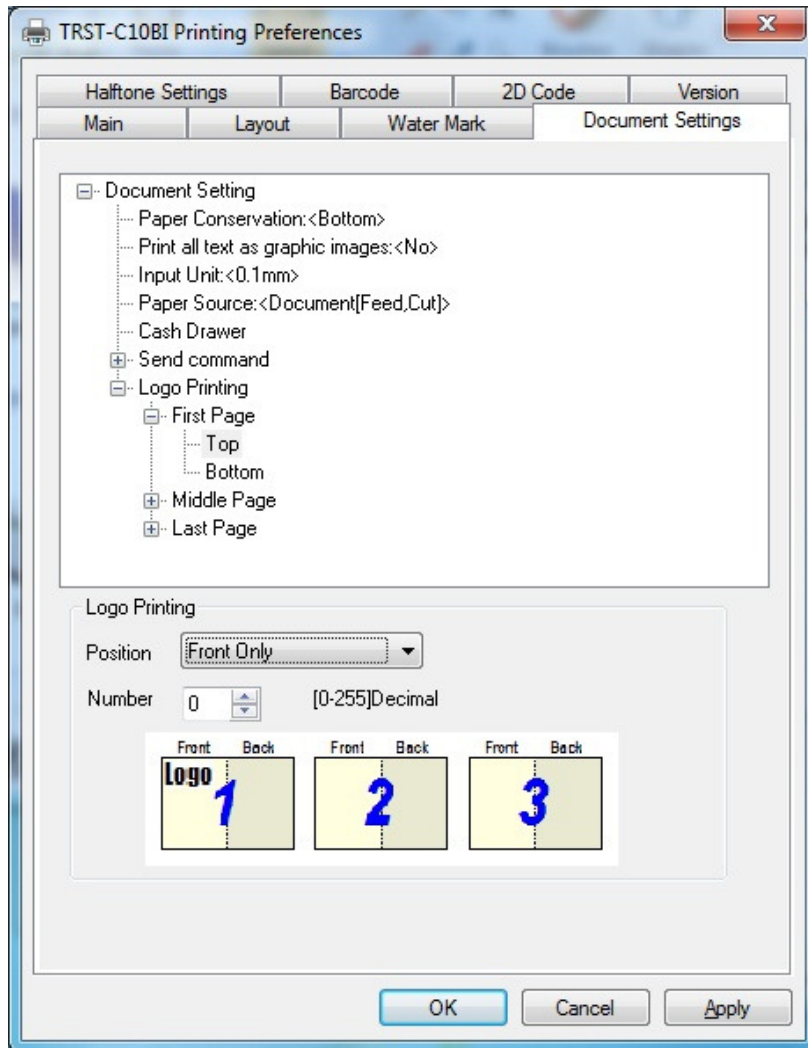
8.1.1 Document setting

- 1) In the receipt printing, the paper length does not matter. Since it depends on the number of items on a receipt, a receipt length is not specified. Select the specified paper size ([58mm x 297mm] or [80mm x 297mm]) that has the paper width you require.
- 2) Right-click on the "TRST-C10BI" icon and select "Printing Preferences".
Click on **Document Settings** tab. Select "Bottom" on the "Paper Conservation". Click "OK".
Also select "Document[Feed,Cut]" on the "Paper Source". Click "OK".
According to the setting of the "Paper Conservation" and the "Paper Source", the receipt is cut at the proper position (end of receipt) automatically.



8.1.2 Logo setting

- 1) Click on **Document Settings** tab. Select "First Page - Top" on the "Logo Printing" to specify the logo position on the receipt. Select "Front Only" at the "Position" combo-box. Also select the logo number at the "Number" combo box to specify the logo. The logo has to be downloaded by the TRST-C10BI commander before using this setting. Click "OK".



8.1.3 Font setting

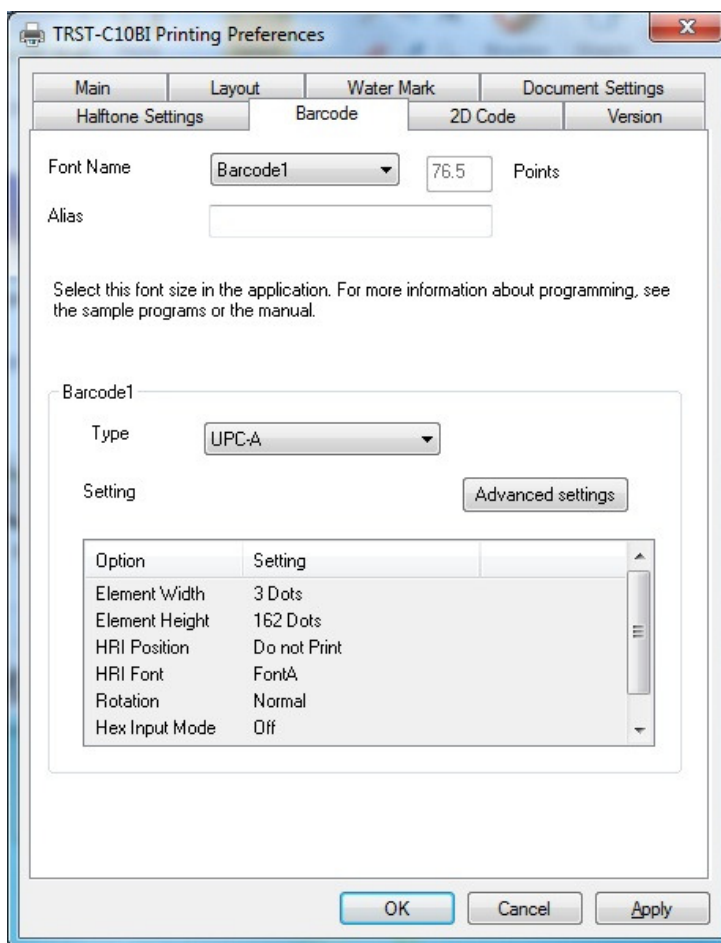
- 1) Select the printer font and send the character data to the printer. Following are printer fonts that can be selected by an application. The sizes of those fonts are fixed.

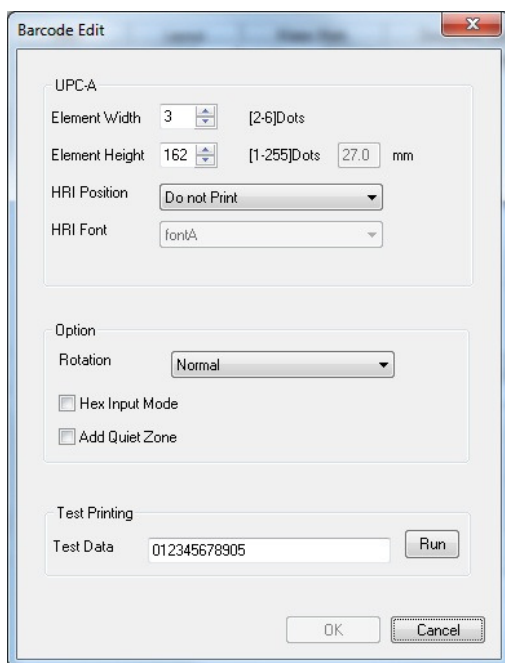
Font1			
Font Name	Point	Font Name	Point
FontA11	8.5	FontB11	8.5
FontA12	17.0	FontB12	17.0
FontA21	8.5	FontB21	8.5
FontA22	17.0	FontB22	17.0
FontA24	34.0	FontB24	34.0
FontA42	17.0	FontB42	17.0
FontA44	34.0	FontB44	34.0
FontA48	68.1	FontB48	68.1
FontA84	34.0	FontB84	34.0
FontA88	68.1	FontB88	68.1

Font2			
Font Name	Point	Font Name	Point
FontA11	9.9	FontB11	9.9
FontA12	19.9	FontB12	19.9
FontA21	9.9	FontB21	9.9
FontA22	19.9	FontB22	19.9
FontA24	39.7	FontB24	39.7
FontA42	19.9	FontB42	19.9
FontA44	39.7	FontB44	39.7
FontA48	79.4	FontB48	79.4
FontA84	39.7	FontB84	39.7
FontA88	79.4	FontB88	79.4

8.1.4 Barcode setting

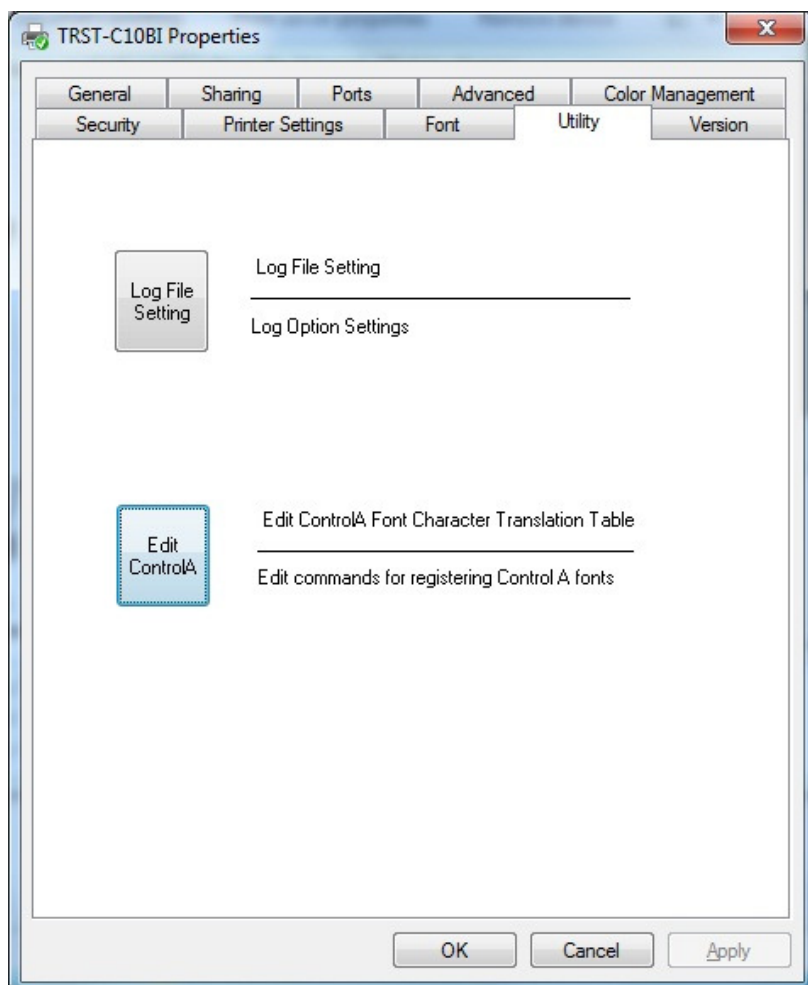
- 1) Click on **Barcode** tab. Select "Barcode1" at the Font Name combo-box, and select the barcode type for Barcode1. Press "Advanced settings" button and specify the barcode attributes (width, height and HRI). Click "OK".
- 2) Select the Barcode1 font and send the numeral character data (e.g. "01234567890123") to the printer. Refer to "8.2 [Print Rendering](#)" in detail.

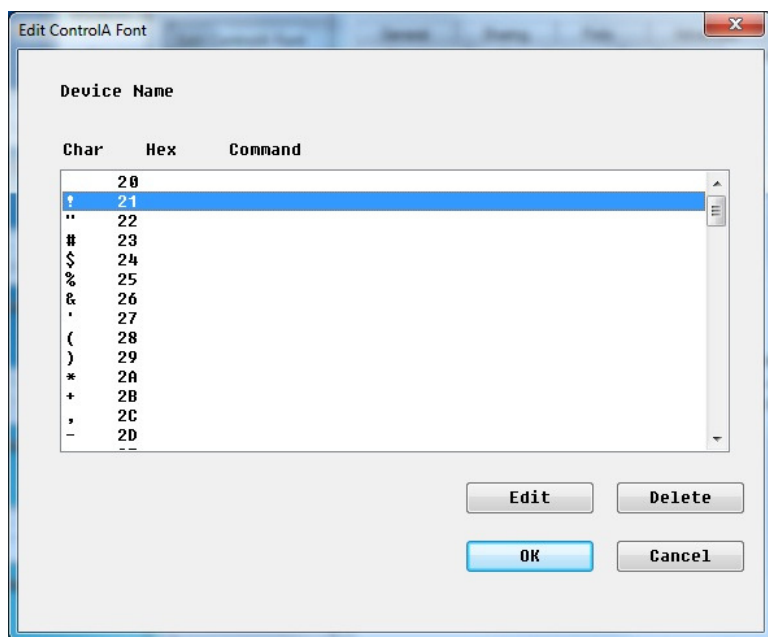




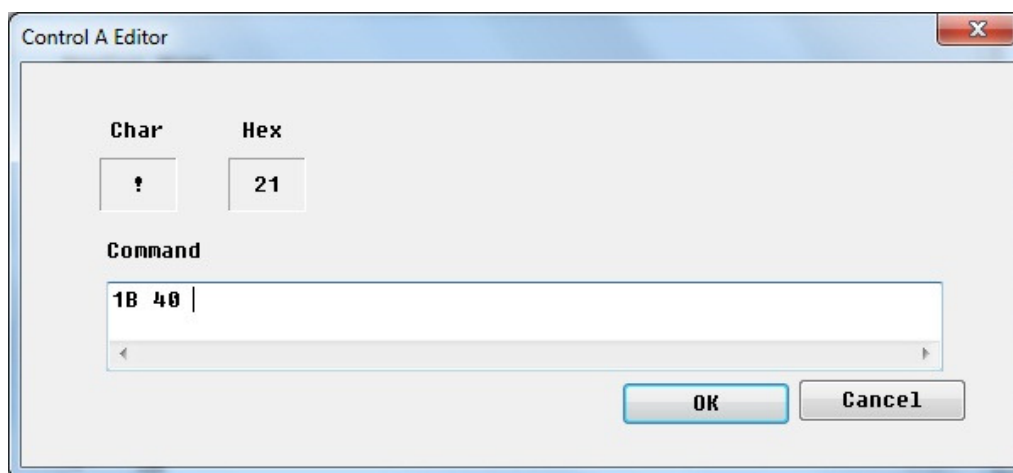
8.1.5 ControlA Font setting

- 1) Open Printer Properties and click on **“Utility”** Tab.
- 2) Select character “!” (0x21) and click on **“Edit”** button.





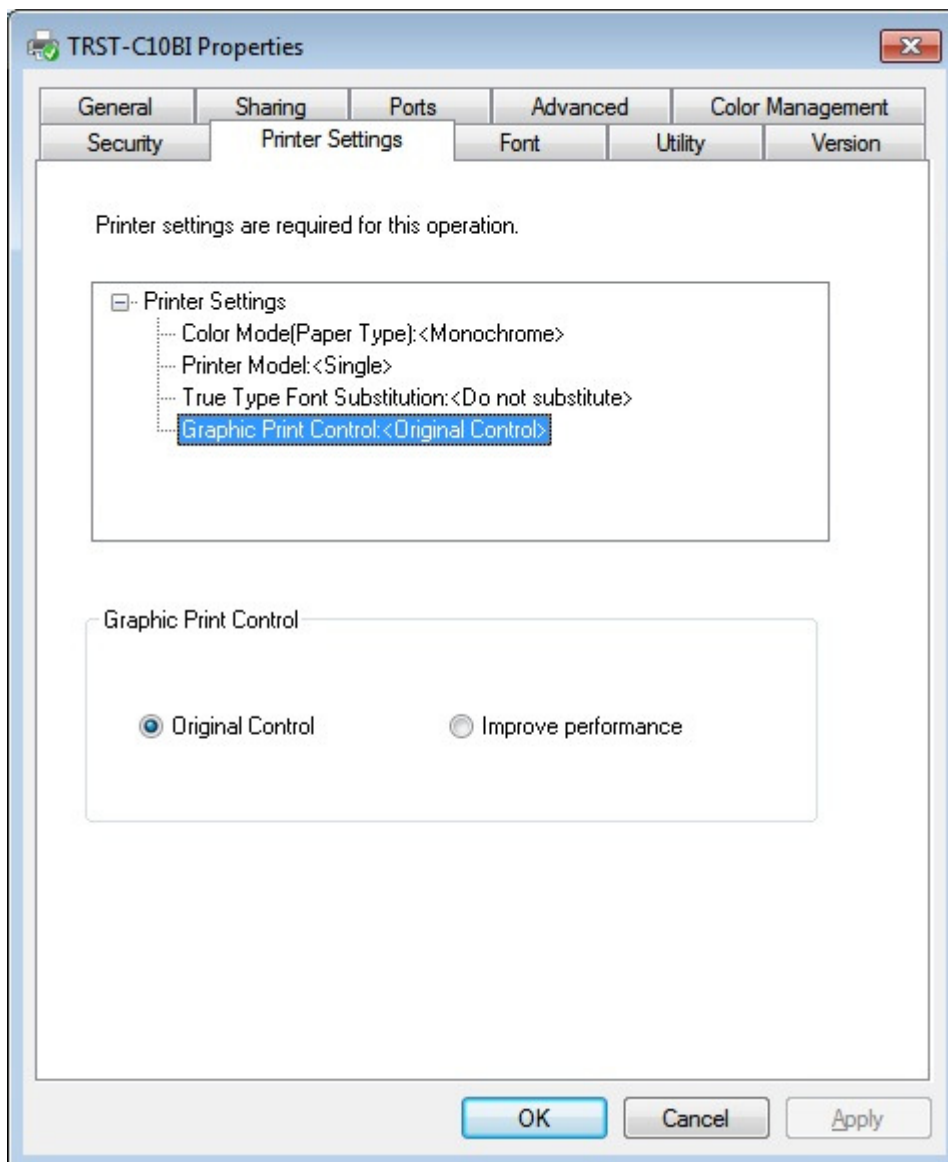
3) Input 1B 40 (Initialize the printer command) and click on OK.



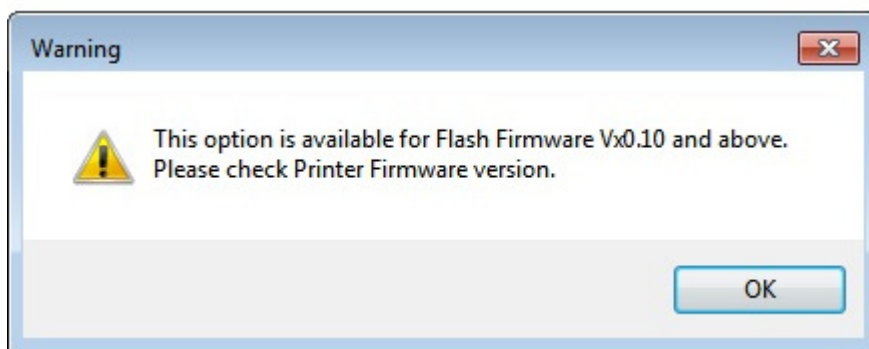
4) Select the ControlA font and send "!" character to the printer. The printer will be initialized at the end of the receipt. Refer to "8.2 [Print Rendering](#)" in detail.

8.1.6 Graphic Print Control (Only for C10)

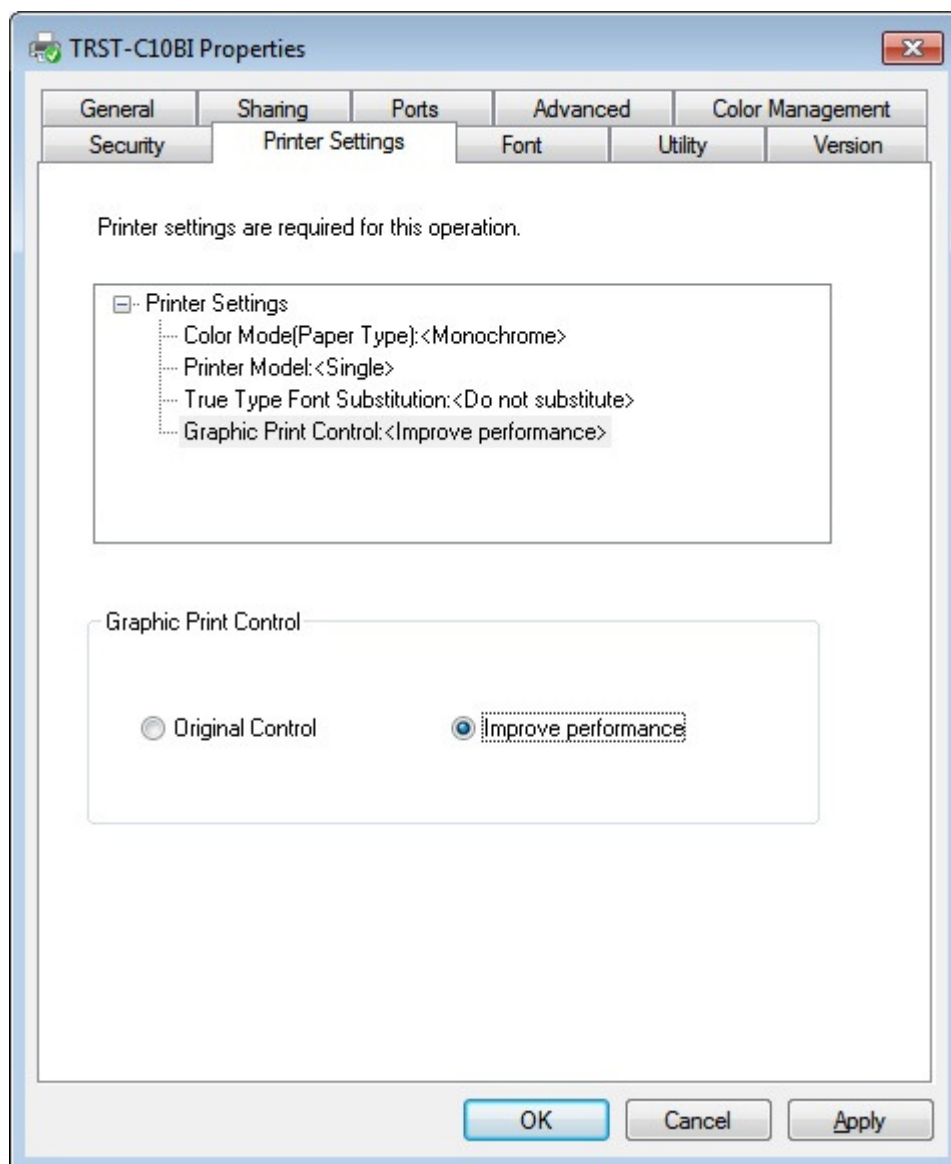
- 1) Open Printer Properties and click on “**Printer Settings**” Tab.
- 2) Select “**Graphic Print Control**” and Change it to “**Improve performance**”



Note: For TRST-Axx model, the “Graphic Print Control” is fixed to “**Original Control**”.

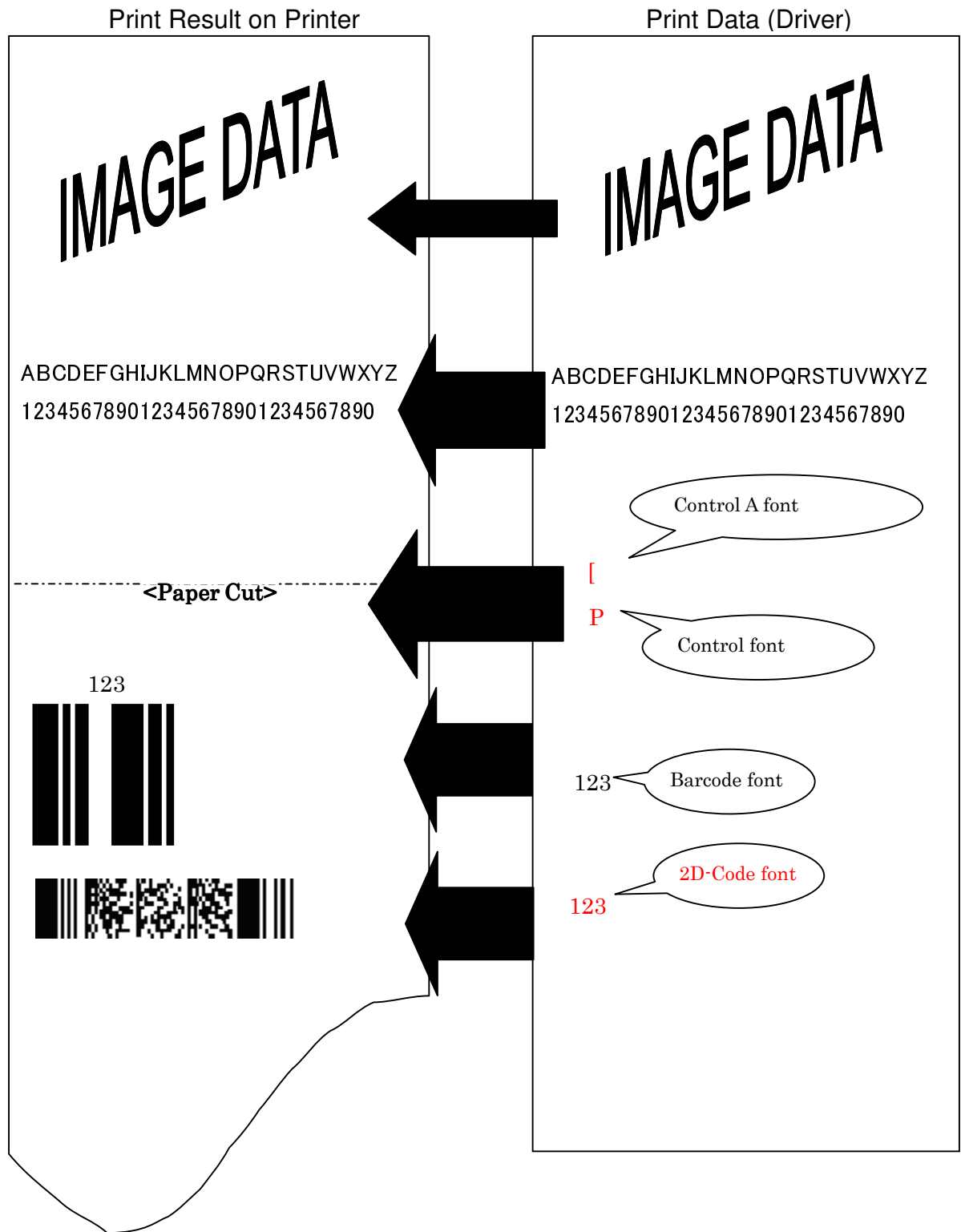


Note: This “**Improve performance**” is only support for C10 model with Flash Firmware Vx0.10 and above.



- 3) Print Speed will be improved after “**Improve performance**” is selected and this setting only effect during the Graphic printing.

8.2 Print Rendering



9 Note

9.1 Log file setting

This function is for the analysis of the printer and the printer driver issues. Therefore please don't change this setting normally. It would slow down the performance.